

R100818/3 Russula Velenovskyi  
SG Russula / S Polychromae / Ss Paraintegrinae

EXS R10/010

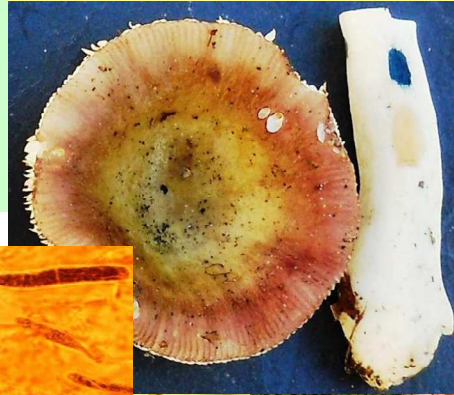
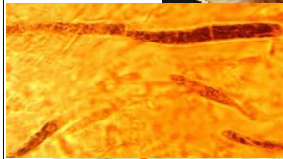
R. vel

RECTO

LIEU L-Bourglinster  
GPS -  
COOR 83/83  
ALT 390 m  
ECOL Feuillus/Conifères  
ODOR

5	SPCO	ROM	DAG
P	Ia- IIa	1- 4	
Q	IIb-IIIb	5-11	
R	IIIc- IVe	12-26	
6	S-ACRE	T DOUX U	
D	9-11		R IIIa-b S IIIa-b
F	4	G 3	

- 1 A ro-rs-po
- B ve-ol
- C ja-or
- D bl-li-vo
- E wh +-
- F br-gr-no
- G mixte



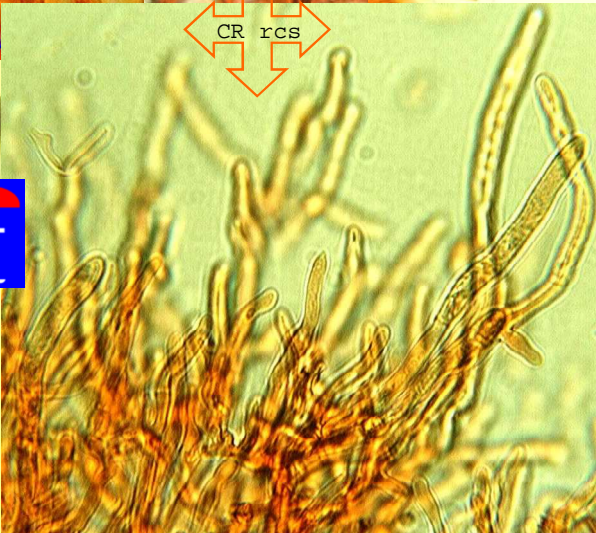
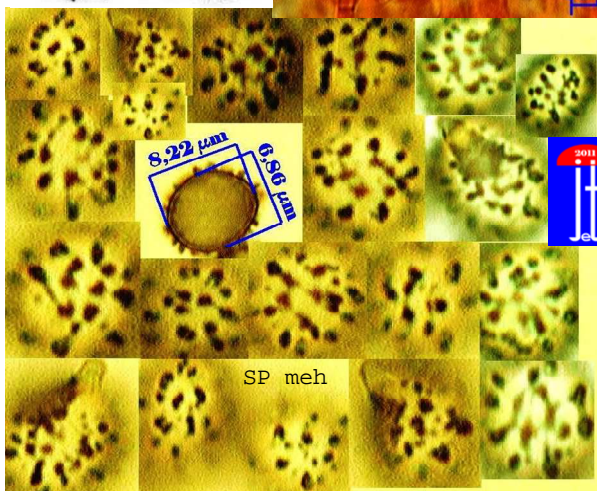
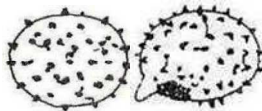
- 2 CUTIS SEP
- H I J
- ±¼ ¼¼ +¾



- 3 STIPE
- K wh
- L color

- 4 CHAPEAU Ø
- M 10-20
- N 3-10 cm
- O 1- 3

- 7 V CHAIR
- DECOLOR
- 8 W DC+ incrustées\*
- X DC-HP-
- Y HP+
- Z DC+HP+



REMARQUES (% NOTES verso)

REF:

RO804/SA1046/BM68#95/BK6-207/CR1476/ER200/KG2-496/MA5-491/GR432

1	2	3	4	/	5	6	7	8
A	I	K	N		Q	T	-	W
-	-	L	-		-	-	-	*