

R110922/02 *Russula nigricans*
SG Compactae / S Compactae / Ser Acrifolia

EXS R11/057

R.nig
RECTO 1

LIEU L-Wilwerwiltz
GPS -
COOR W3-14-15(JeT)
ALT 420 m
ECOL Picea



| | | | | | |
|-----|----------|--------|--------|---|----|
| 5 | SPCO | ROM | DAG | | |
| P | Ia- | IIa | 1- 4 | D | Ia |
| Q | IIb-IIIb | 5-11 | | R | S |
| R | IIIc- | IVe | 12-26 | | |
| 6 | S-ACRE | T-DOUX | U-AMER | | |
| Fve | -Gaiac- | | | | |
| e-- | <5"+++ | | | | |
| Q | >5" | | | | |

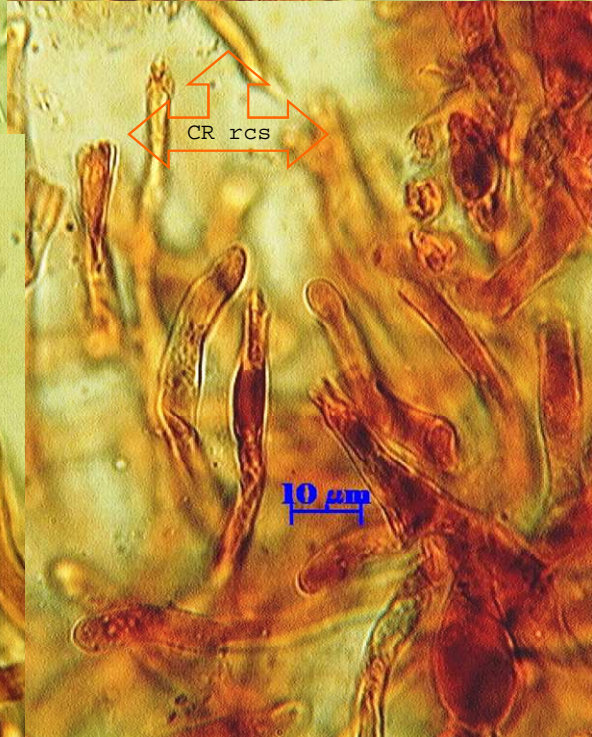
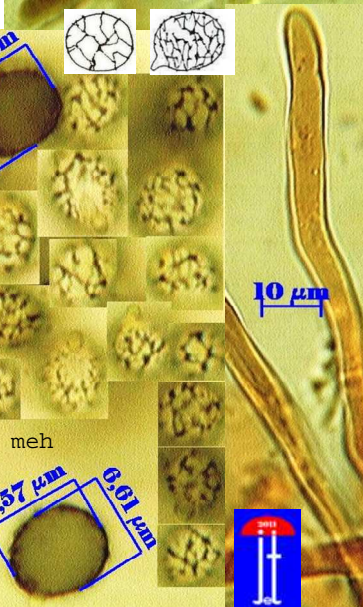
- 1 A ro-rs-po
- B ve-ol
- C ja-or
- D bl-li-vo
- E** wh +- (circled)
- F** br-gr-no (circled)
- G mixte

- 2 CUTIS SEP
- H **I** J (circled)
- ±¼ ¼¾ +¾

- 3 STIPE
- K** wh (circled)
- L color

- 4 CHAPEAU Ø
- M** 10-20 (circled)
- N** 3-10 cm (circled)
- O 1- 3

- 7 V CHAIR
- DECOLOR
- 8 W DC+
- X** DC-HP- (circled)
- Y HP+
- Z DC+HP+



REMARQUES (% NOTES verso)

REF:

RO195/SA154/BM54#7/BK6-168/CR1345/ER164/KG2-438/MA5-403/GR44

| | | | | | | | | |
|---|---|---|---|---|---|---|---|---|
| 1 | 2 | 3 | 4 | / | 5 | 6 | 7 | 8 |
| E | I | K | M | | P | S | - | X |
| F | - | - | N | | - | T | - | - |