

R110801/01 Russula emetica
SG Russula / S Russula / Ss Russula / Ser Russula

EXS R11/%REM

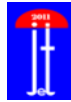
R. eme
RECTO

LIEU D-Jena
GPS -
COOR -
ALT - m
ECOL Picea

5 SPCO ROM DAG
P Ia- IIA 1- 4
Q IIb-IIIb 5-11
R IIIc- IVE 12-26
6 S-ACRE T-DOUX U-AMER

F -
e-- -Gaiac-
Q <5"
>5"

1 A ro-rs-po
B ve-ol
C ja-or
D bl-li-vo
E wh +-
F br-gr-no
G mixte



2 CUTIS SEP
H I J
±¼ ¼¾ +¾

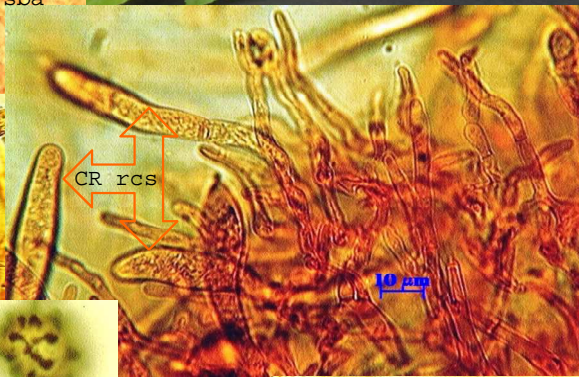
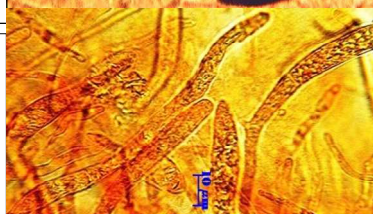
3 STIPE
K wh
L color

4 CHAPEAU Ø
M 10-20
N 3-10 cm
O 1- 3

7 V CHAIR
DECOLOR
8 W DC+
X DC-HP-
Y HP+
Z DC+HP+

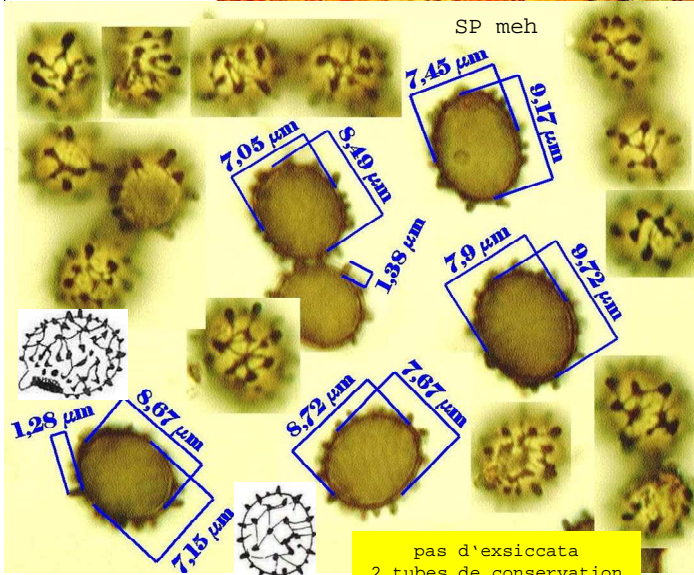


CS sba



CR rcs

10 µm



SP meh



10 µm

pas d'exsiccata
2 tubes de conservation
avec liquide de Locquin
% Exsic 2011

REMARQUES (% NOTES verso)

REF:

RO395/SA554/BM70#20/BK6-124/CR1371/ER224/KG2-555/MA5-435/GR176

1 2 3 4 / 5 6 7 8
A I K N P S - W
- J - - - - -