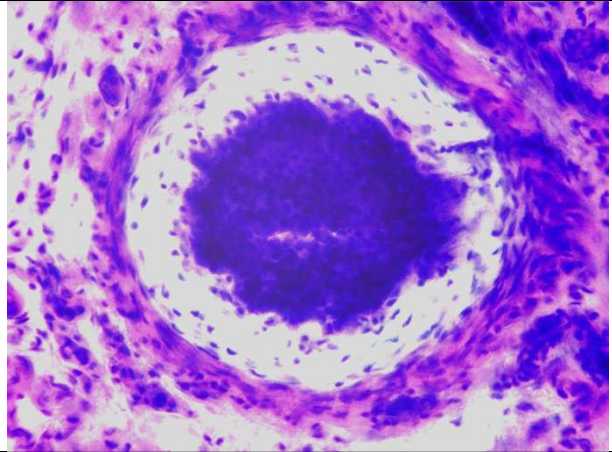
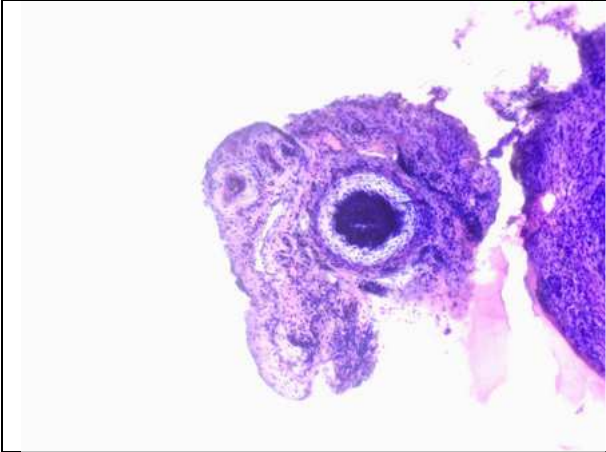
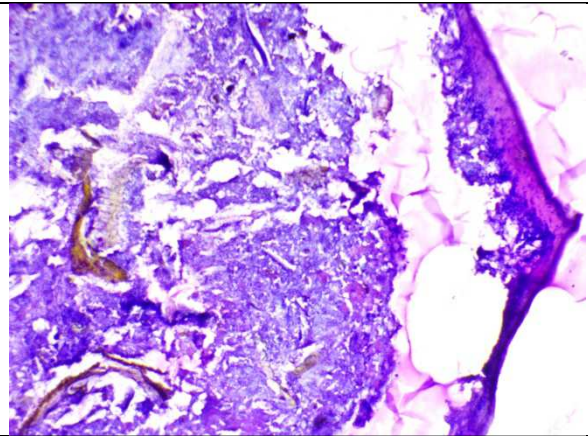
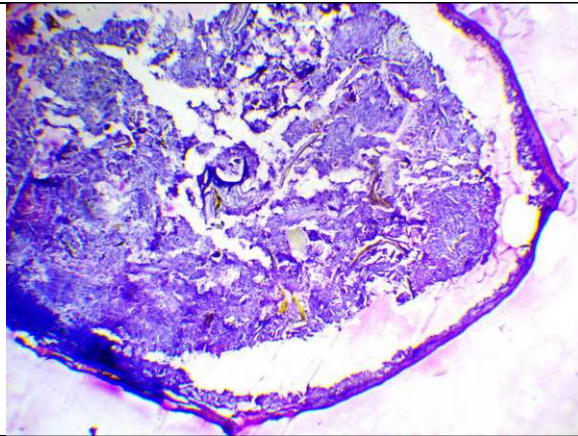


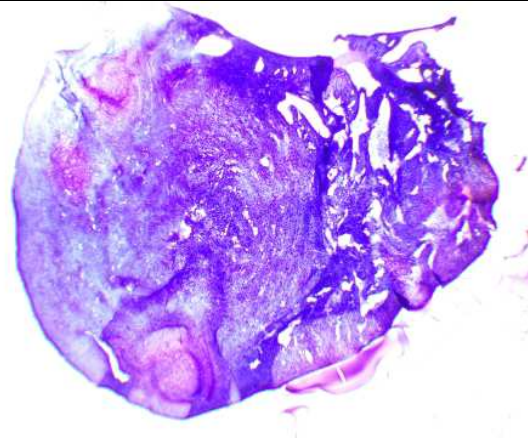
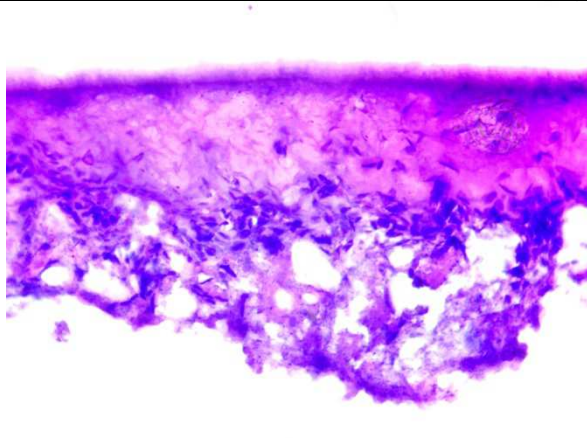
Travail d'étude histologique réalisée par Marc Libin après pratique d'une inclusion à la paraffine, de coupes (au microtome à manivelle) et application d'une coloration sur les différents organes d'une souris.



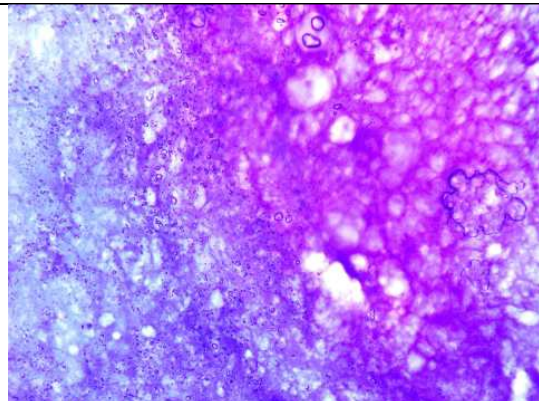
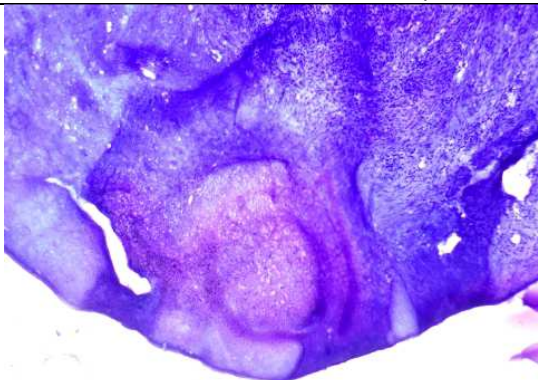
↑ 100 x Coupe radiale dans une artère 400 x ↑

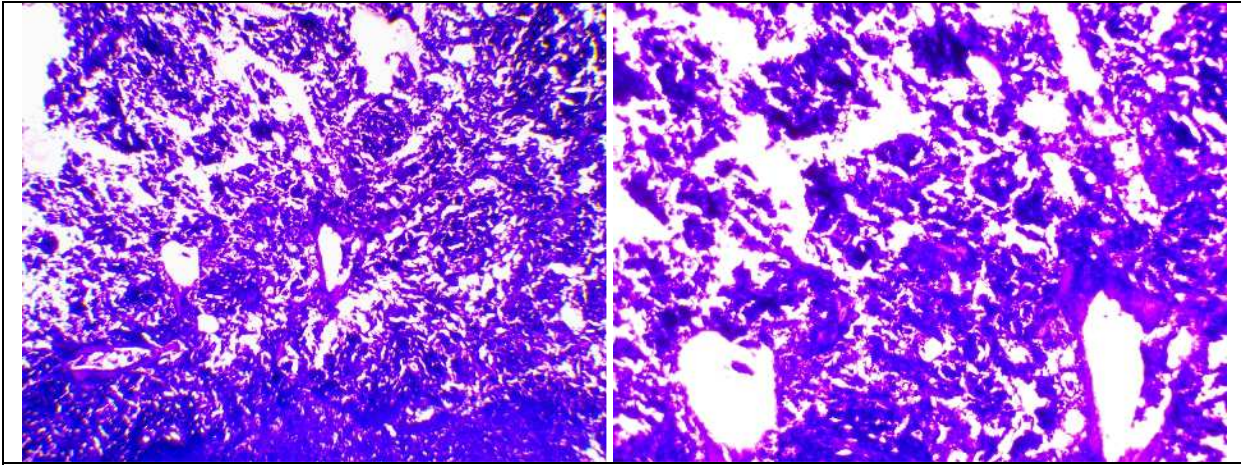


↓ 400x ↑ 40 x Coupe radiale dans le caecum 100 x ↑

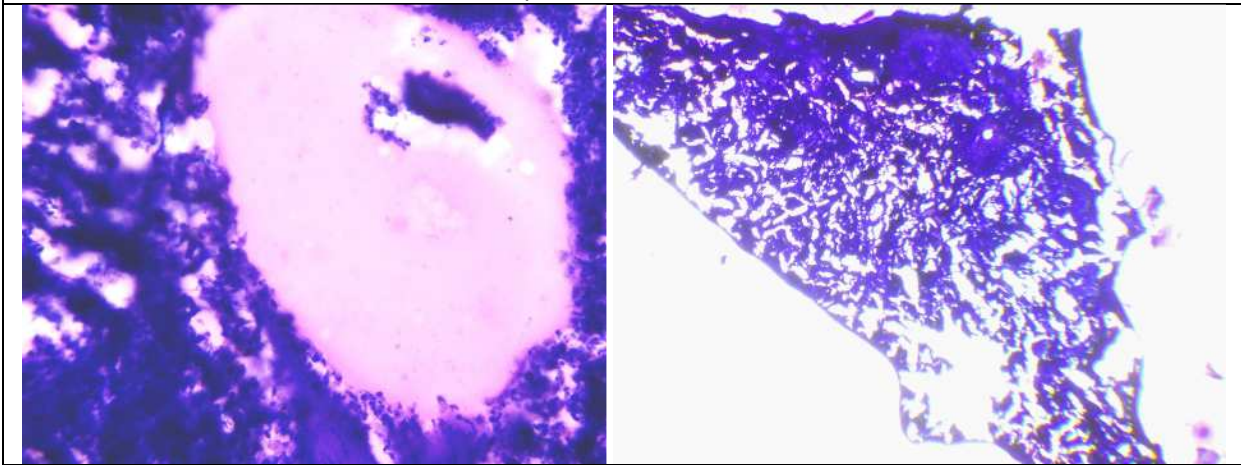


100 x ↓ Coupe radiale dans le colon ↑ 40 x 400x ↓

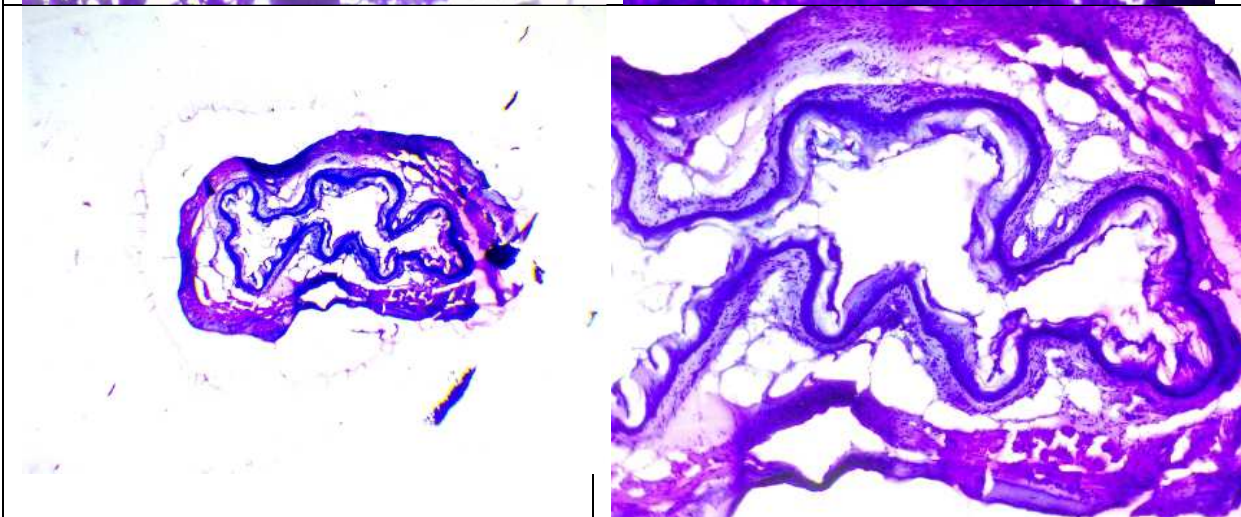
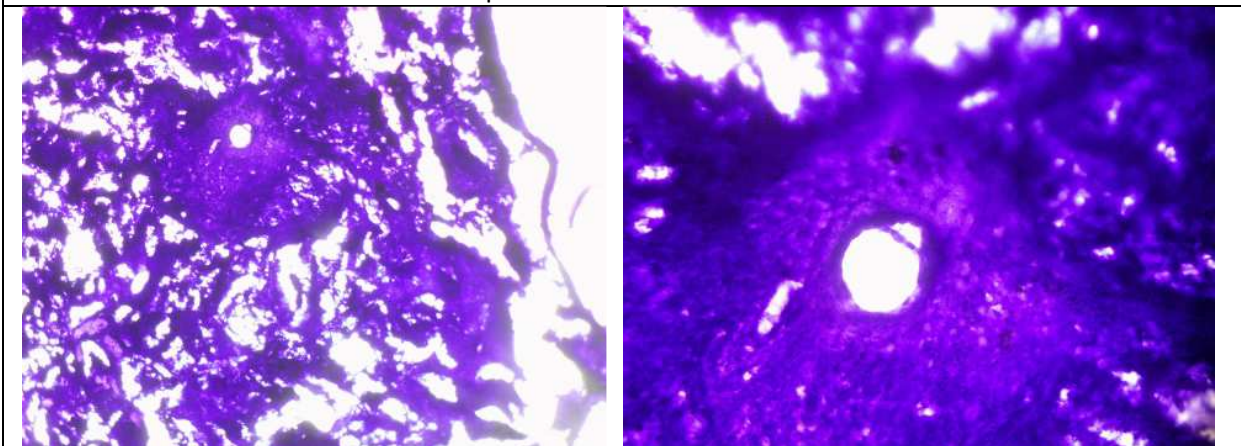




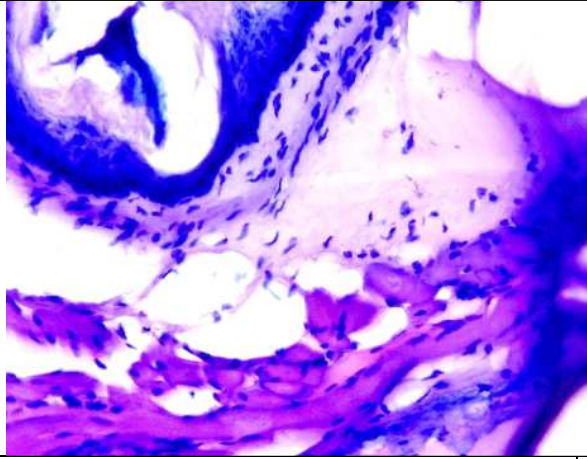
↓ 400x ↑ 40 x Coupe latérale 100 x ↑ et transversale dans la rate ↓ 40x



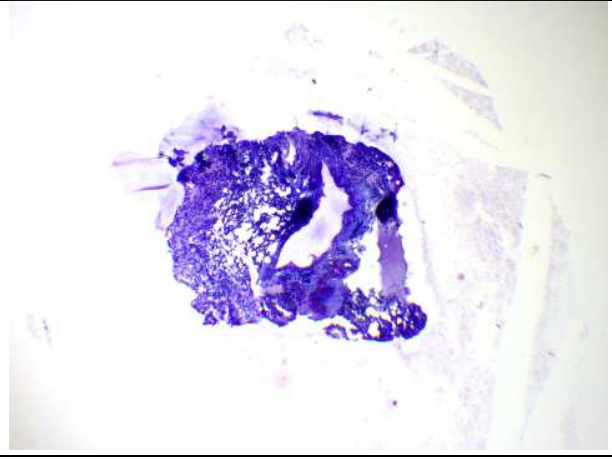
↓ 100 x Coupe transversale dans la rate ↓ 400x



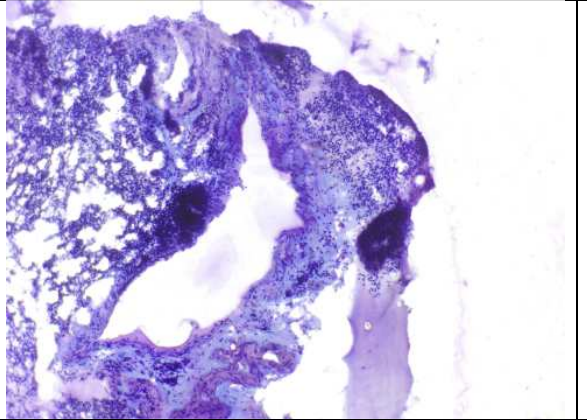
↑ 400 x Coupe transversale dans l'oesophage ↑ 100x



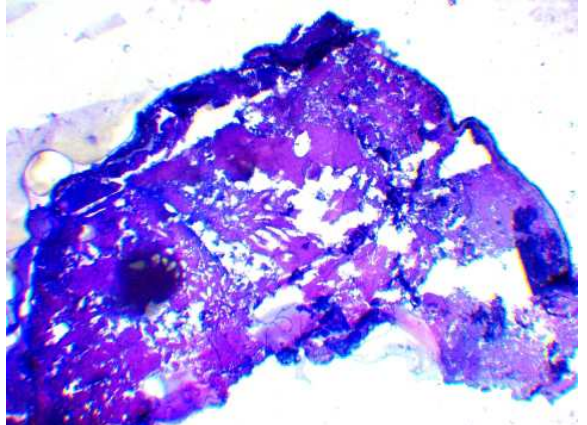
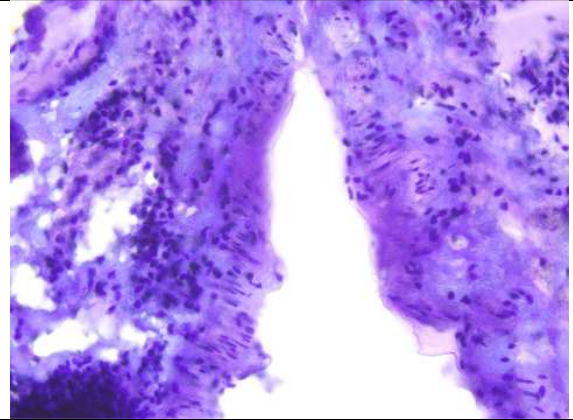
Coupe transversale dans l'oesophage ↑ 400x



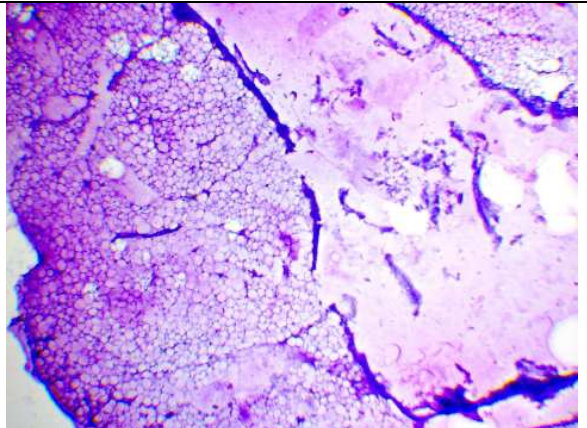
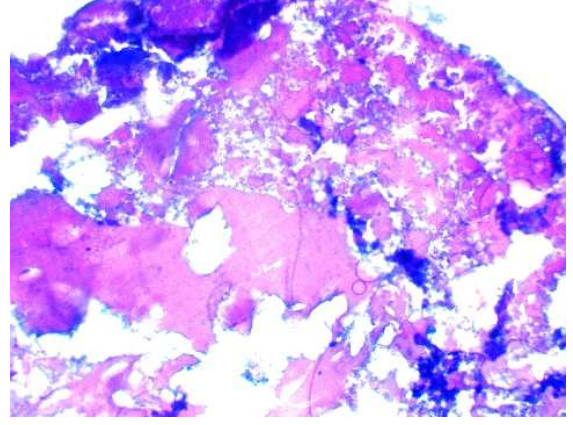
Coupe radiale dans une veine 40x ↑



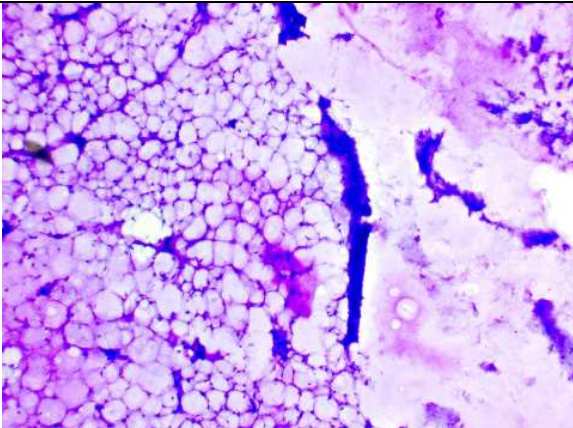
100x ↑ Coupe radiale dans une veine 400x ↑

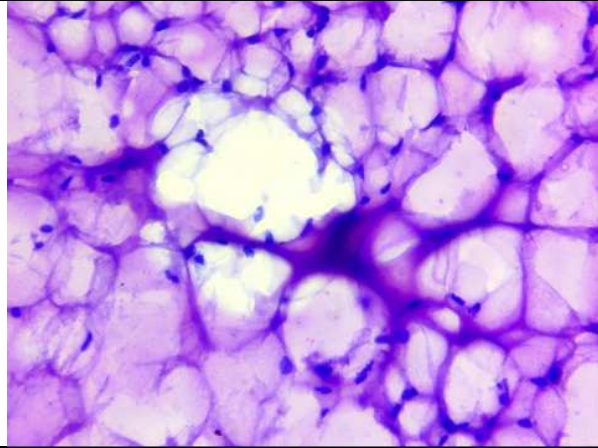


400x ↑ Coupe latérale dans un ovaire 100x ↑

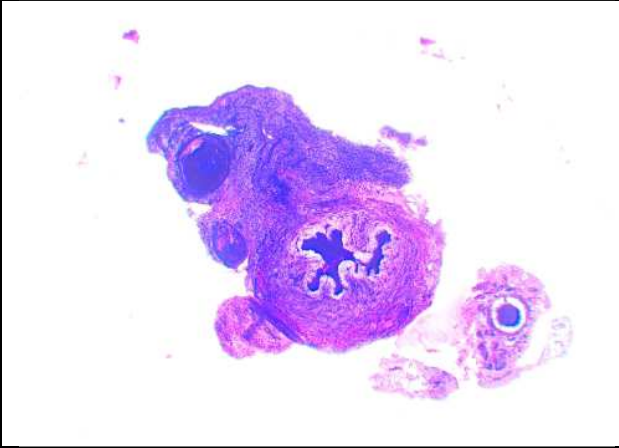


40x ↑ Coupe latérale dans l'utérus 100x ↑

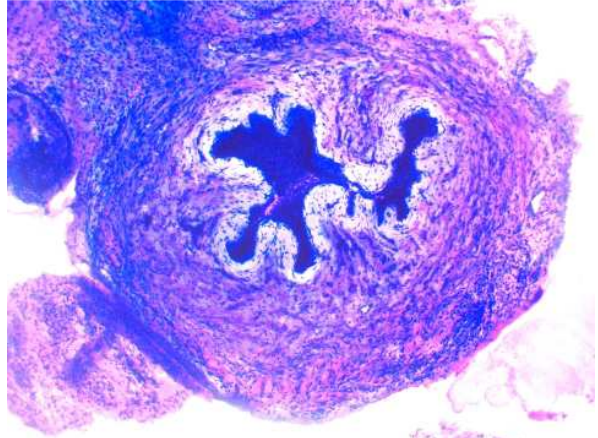




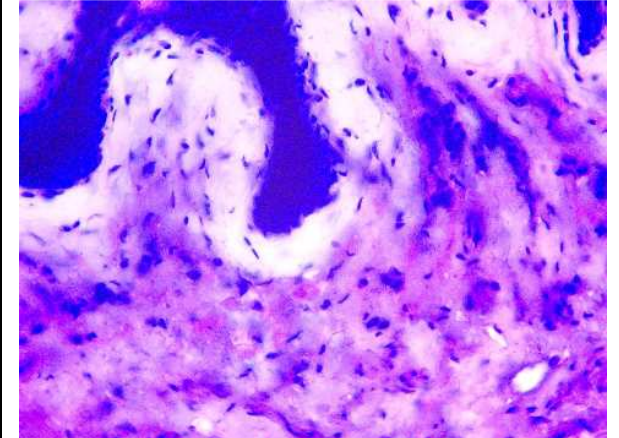
400x ↑ Coupe latérale dans l'utérus



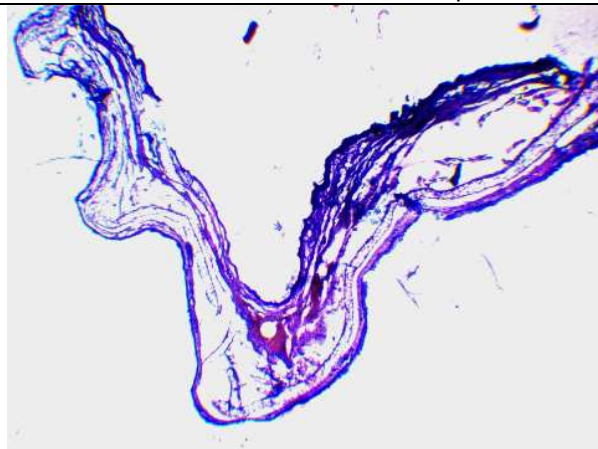
40x ↑ Coupe transversale dans la vessie



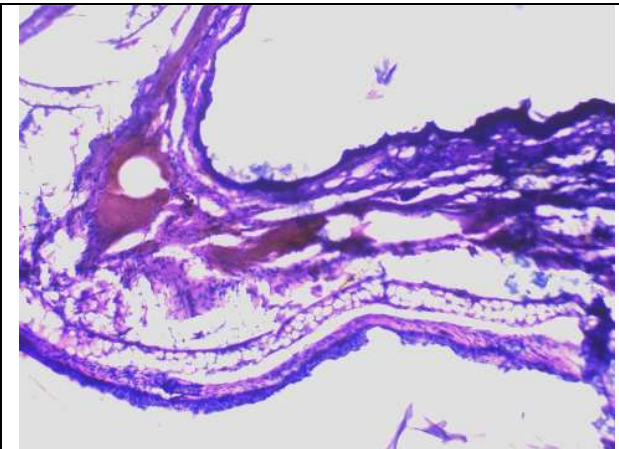
100x ↑ Coupe transversale dans la vessie



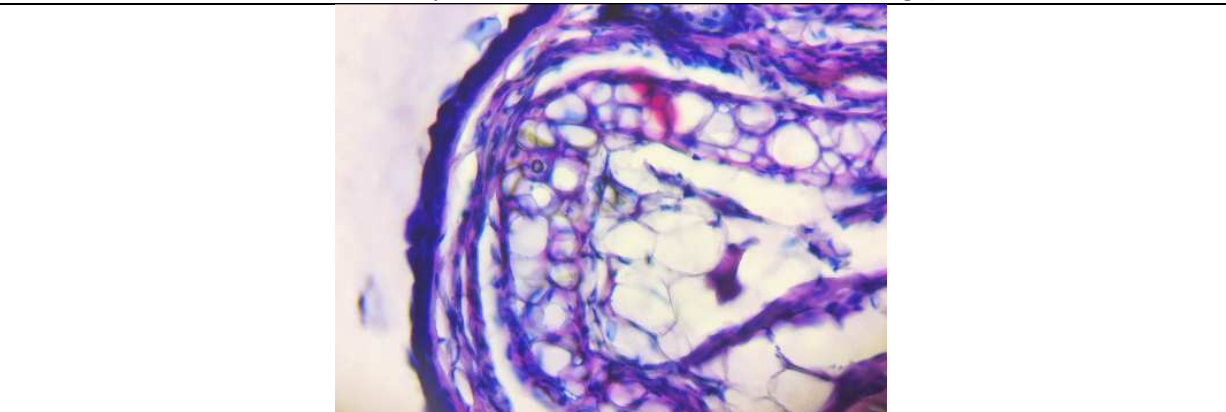
400x ↑



400x ↓



40x ↑ Coupe transversale dans une oreille (cartilage)



100x ↑

Pour l'interprétation de ces coupes, vous trouverez tous les renseignements nécessaires à l'adresse suivante : <https://www.histology.be/atlas/HSA/index.html>