

R110627/-- *Russula stenotricha*  
SG Heterophyllidia / S Heterophyllae / Ss Griseinae

EXS HF

**R.ste**  
RECTO

LIEU  
GPS

COOR  
ALT  
ECOL

HAMPE Felix



5	SPCO	ROM	DAG			
P	Ia-	IIa	1- 4			
Q	I Ib-	IIIb	5-11	D	R	S
R	IIIc-	IVe	12-26			
6	S-ACRE	T-DOUX	U-AMER			
F		G*				

- 1 A ro-rs-po
- 2 B ve-ol
- 3 C ja-or
- 4 D bl-li-vo
- 5 E wh +-
- 6 F br-gr-no
- 7 G mixte

\*Gaiac\*  
<5"  
>5"

- 2 CUTIS SEP
- H I J
- ±¼ ¼¾ +¾

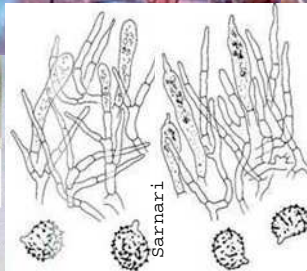
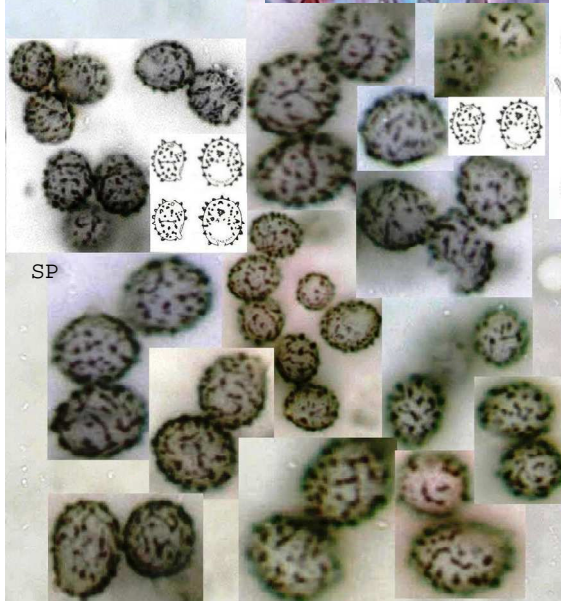
- 3 STIPE
- K wh
- L color

- 4 CHAPEAU Ø
- M 10-20
- N 3-10 cm
- O 1- 3

- 7 V CHAIR
- DECOLOR
- 8 W DC+
- X DC-HP-
- Y HP+
- Z DC+HP+



Photos : HAMPE Felix  
1= x 3,7 - 8,3µm  
2= 13,1 - 31,3 x 2,6 - 5,7µm  
3= 26,1 - 66,8 x 6,1 - 10,1µm



REMARQUES (% NOTES verso)

REF:

RO289/SA296/BM-#57/BK6--/CR1422/ER186/KG2--/MA5--/GR-



1 2 3 4 / 5 6 7 8  
B I K N Q T - W