

R110625/01-110630/01 Russula parazurea
SG Heterophyllidia / S Heterophyllae / Ss Griseinae

EXS R11/002-004

R.par
RECTO

LIEU L-Wilwerwiltz
GPS N 49°58'65.6"
E 05°58'33.0"
COORD -
ALT 355 m
ECOL Carpinus/Quercus



5	SPCO	ROM	DAG
P	Ia- IIa	1- 4	
Q	I Ib-IIIb	5-11	D 4-7 R IIb-d S IIa-b
R	IIIc- IVe	12-26	
6	S-ACRE	T-DOUX	U-AMER
F	5	G 0*4	

- 1 A ro-rs-po
- B ve-ol
- C ja-or
- D bl-li-vo
- E wh +-
- F br-gr-no
- G mixte



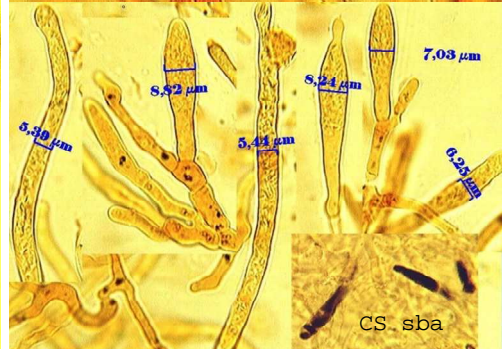
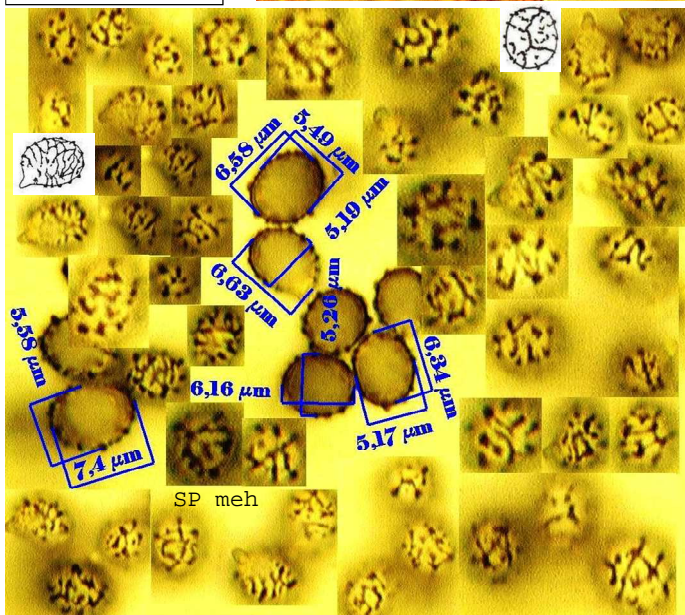
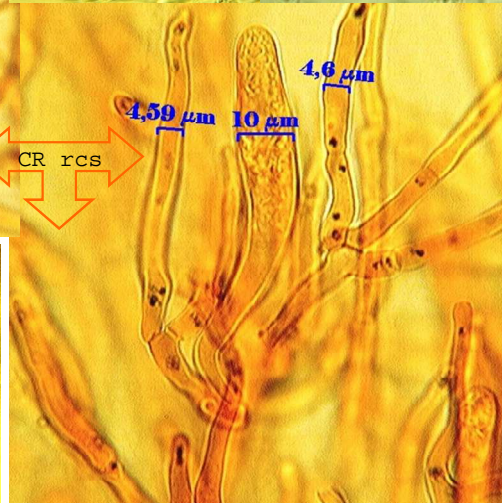
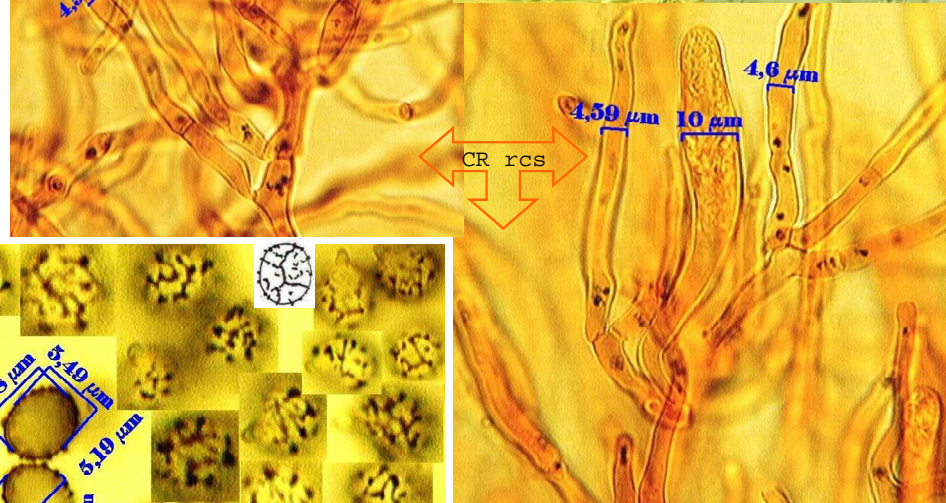
Gaïac
<5" 0
>5" ++

- 2 CUTIS SEP
- H I J
- ±¼ ¼¾ +¾

- 3 STIPE
- K wh
- L color

- 4 CHAPEAU Ø
- M 10-20
- N 3-10 cm
- O 1- 3

- 7 V CHAIR
- DECOLOR
- 8 W DC+
- X DC-HP-
- Y HP+
- Z DC+HP+



REMARQUES (% NOTES verso)

REF:

RO282/SA279/BM58#58/BK6-177/CR1424/ER186/KG2-458/MA5-416/GR106

1	2	3	4	/	5	6	7	8
F	I	K	N		Q	-	T	W
BD	-	-	-		P	-	-	-