

L121026/01 Lactarius hyginus
 SG Piperites / S Glutinosi / Ss Pallidini

EXS L12/012

L.hys
 RECTO

LIEU -
 COOR -
 GPS N -
 E -
 ALT m -
 ECOL Picea

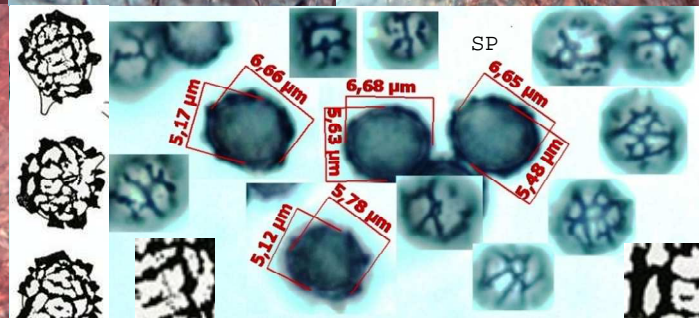
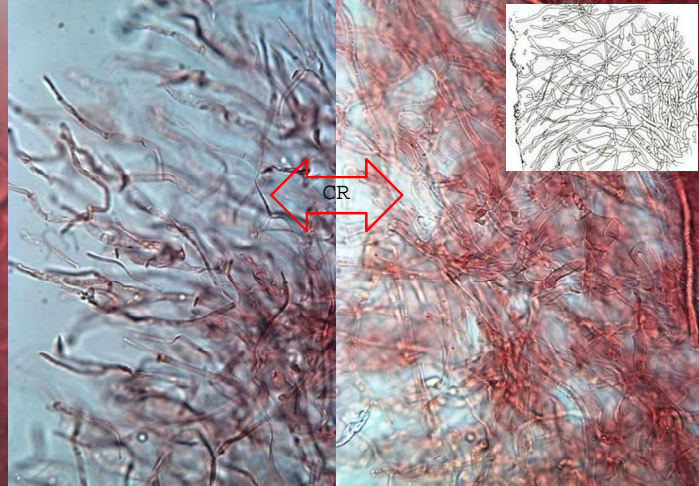
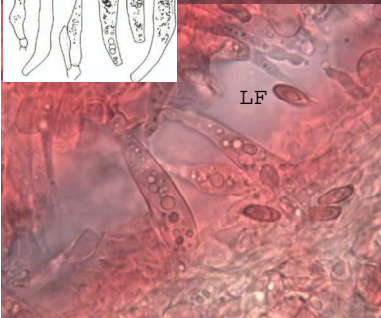
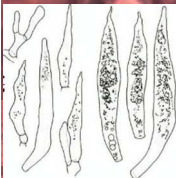
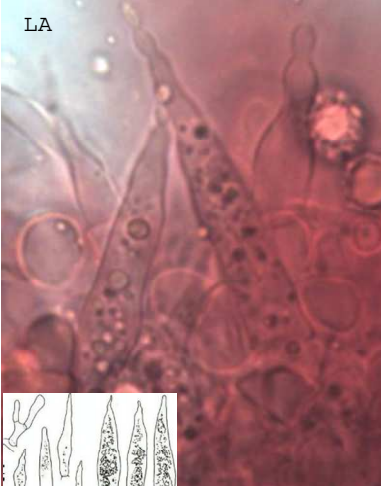
BAILLY Luc
 MLB

DESCRIPTION

THE GENUS LACTARIUS
 FUNGI OF NORTHERN EUROPE 2

LATEX wh P 80

LMHPV -
 TAS +A
 ODO vinaigré



REMARQUES (% verso)

%REF: BA138/BM84#7-16/BK6-29/CR1537/
 GR82/KG2-394/MA6-535



CODE 1 2 3 4 5 6 7
 BMS A G J N Q T X/QUX/RTX/RUX