

***Psathyrella conferta* Eyssart. & Chiaffi 2004**

in Fungi Non Delineati XXIII: 43

Deschuyteneer Daniel & Dusko Trivic



Photo in situ Dusko Trivic

A noter la zone sub-annulaire à proximité de la base du stipe



Photo in situ Dusko Trivic

A noter la zone sub-annulaire à proximité de la base du stipe



Photo in situ Dusko Trivic



Photo in situ Dusko Trivic

**Microcharacters:**

Spores (7,5-) 8-9,5 (-10) x (4-) 4,5-6  $\mu\text{m}$ , av. 8,4 x 5  $\mu\text{m}$ , Q=1,40-2,00, frontally ellipsoid, ovoid, subcylindrical, laterally often with a suprahilar depression, germ pore distinct. In water medium brown, not opaque.

Basidia 4-spored.

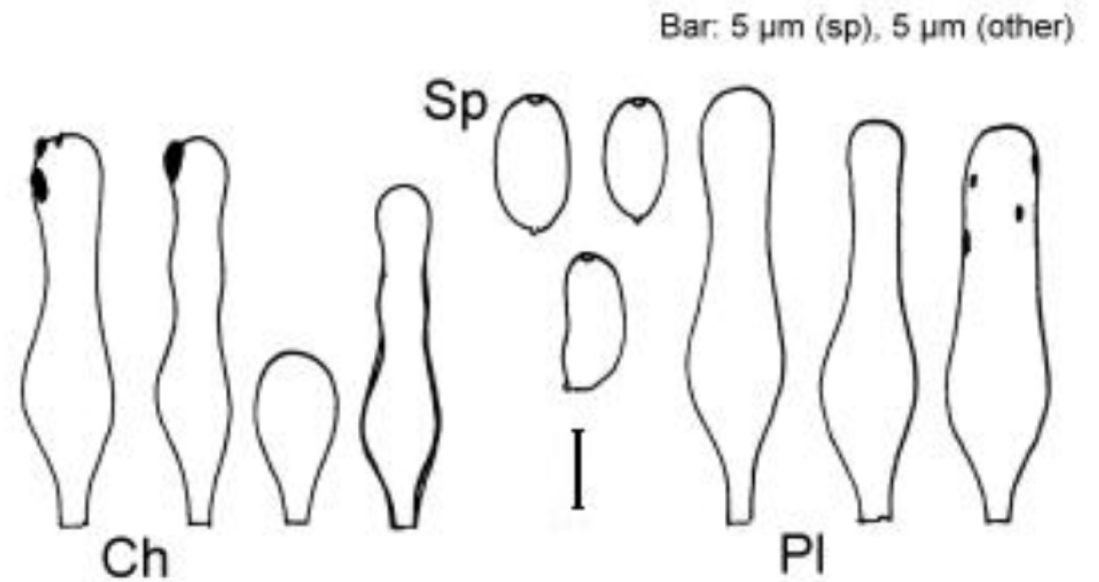
Cheilocystidia 30-62 x 10-15  $\mu\text{m}$ , often with deposits, walls sometimes slightly thickened, numerous.

Clavate marginal cells 20-30 x 9-15  $\mu\text{m}$ , moderately numerous.

Pleurocystidia 53-68 x 11-22  $\mu\text{m}$ , often with deposits, moderately numerous.

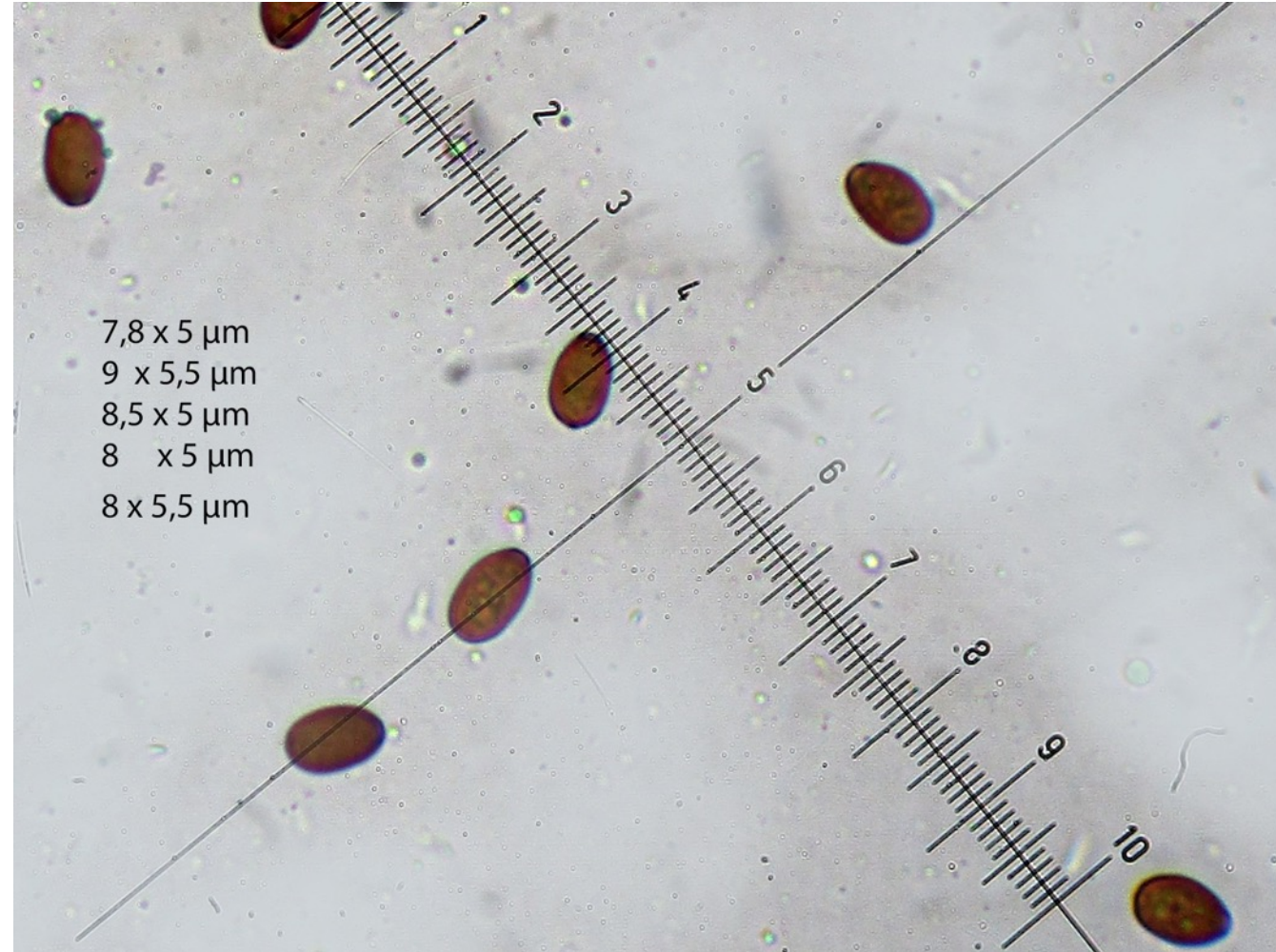
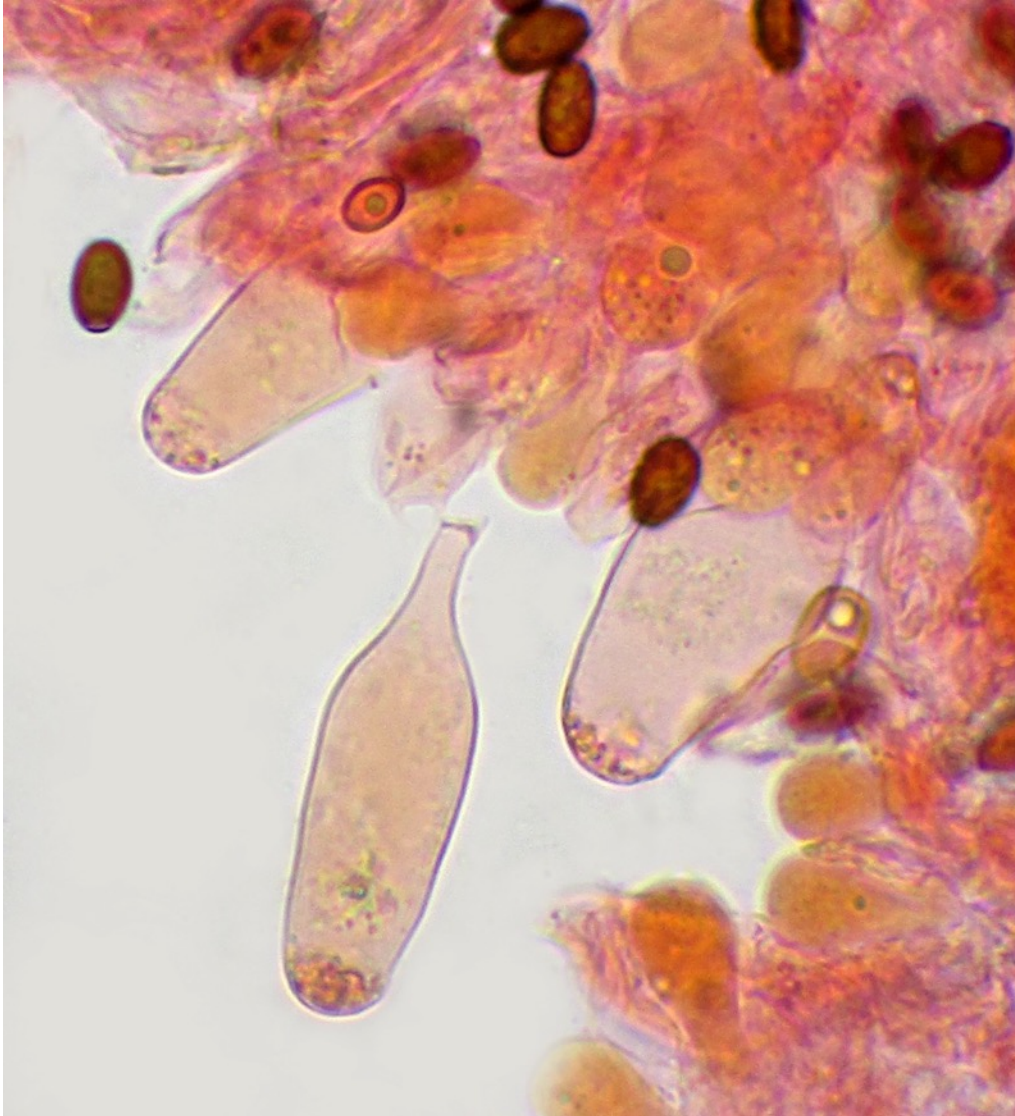
Clamps present.

**Habitat:** soil, in narrow clusters

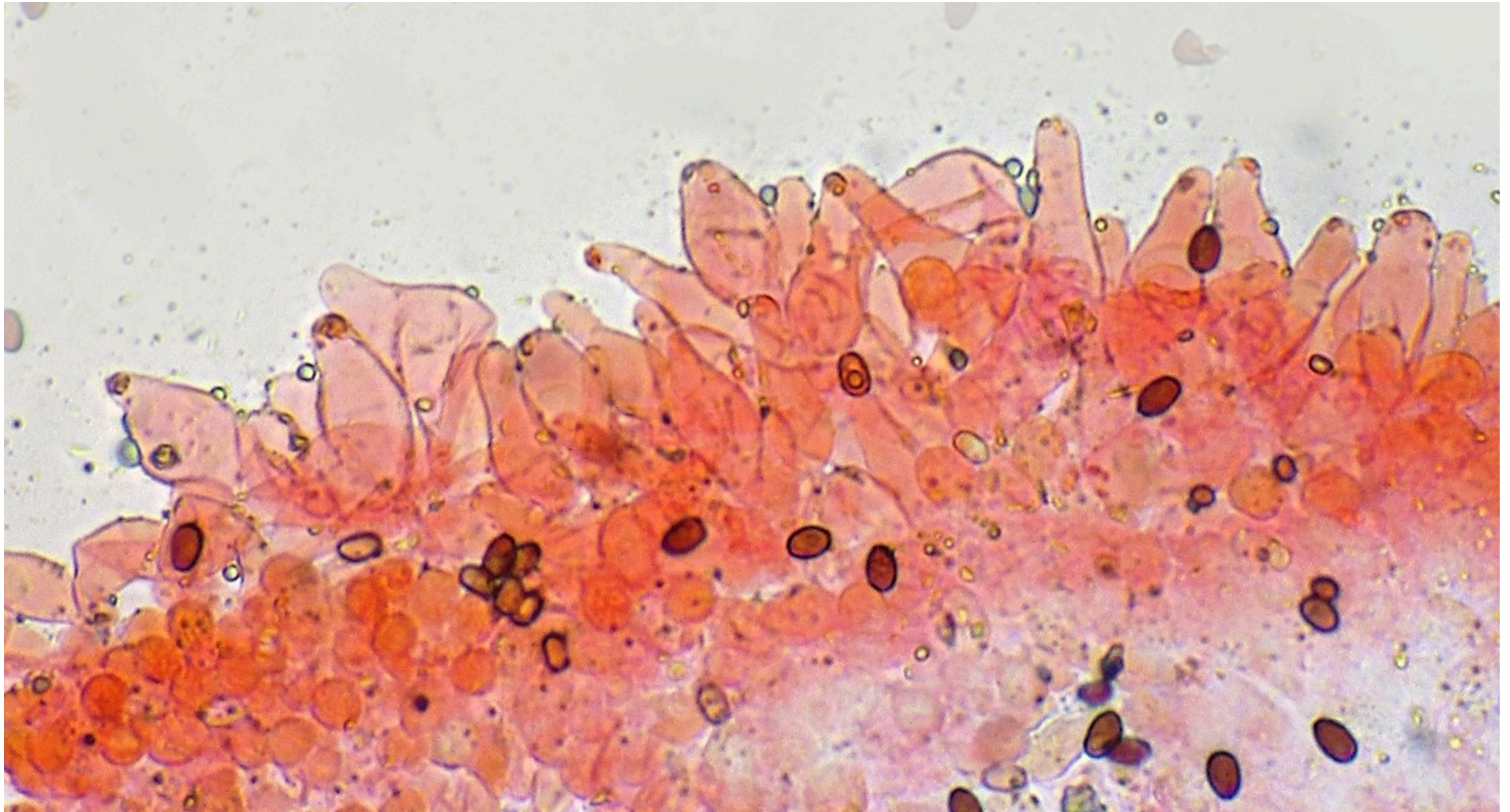


Drawing (changed) according Eyssartier (2004).

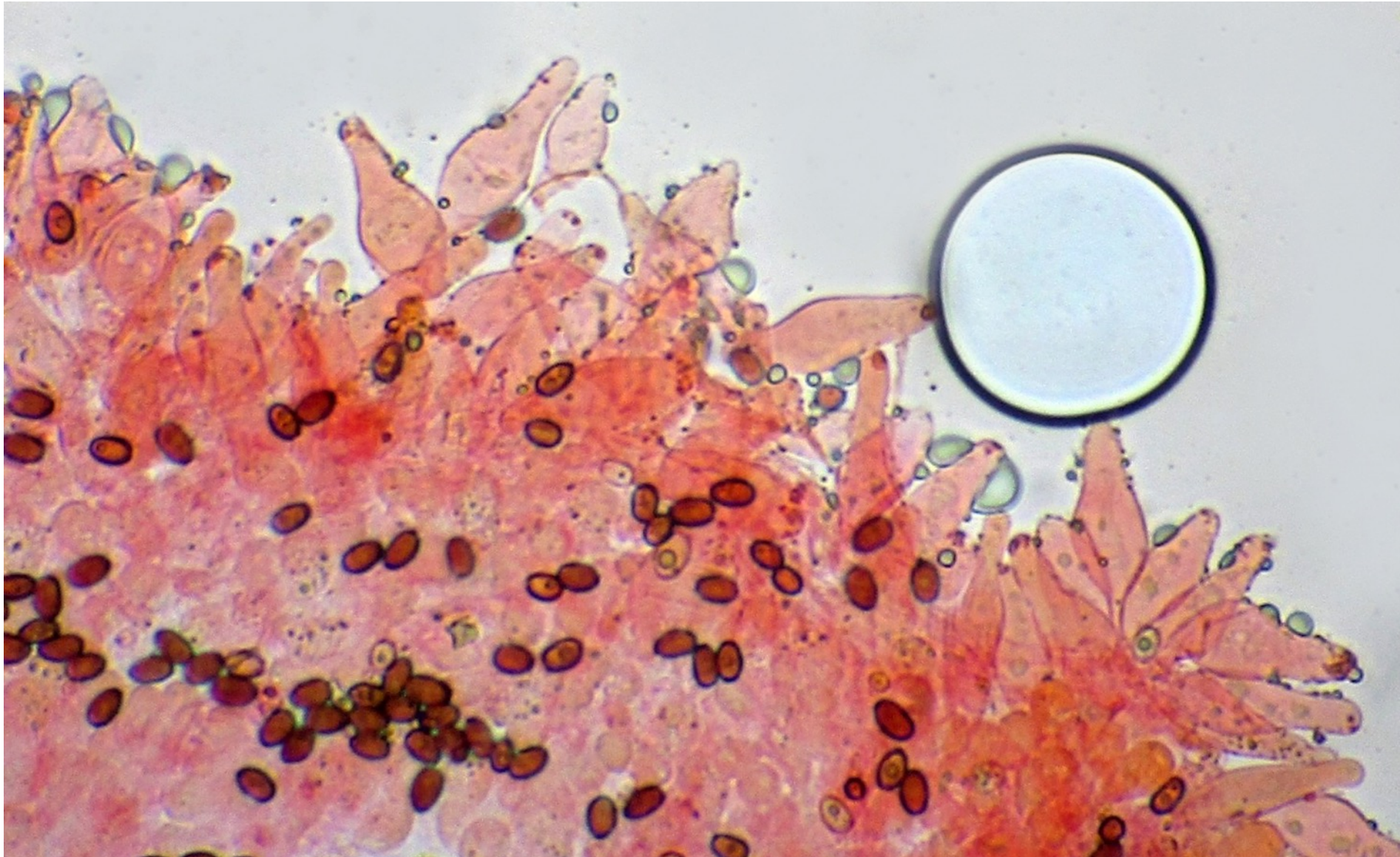
Microscopie réalisée par Dusko Trivic  
A noter les granulations apicales



A noter les dépôts mucoides verdâtres et les granulations apicales



A noter les dépôts mucoides verdâtres et les granulations apicales



**Select. descript.:** Eyssartier (2004): 43ff., Tanchaud & Deschuyteneer (2017): 15