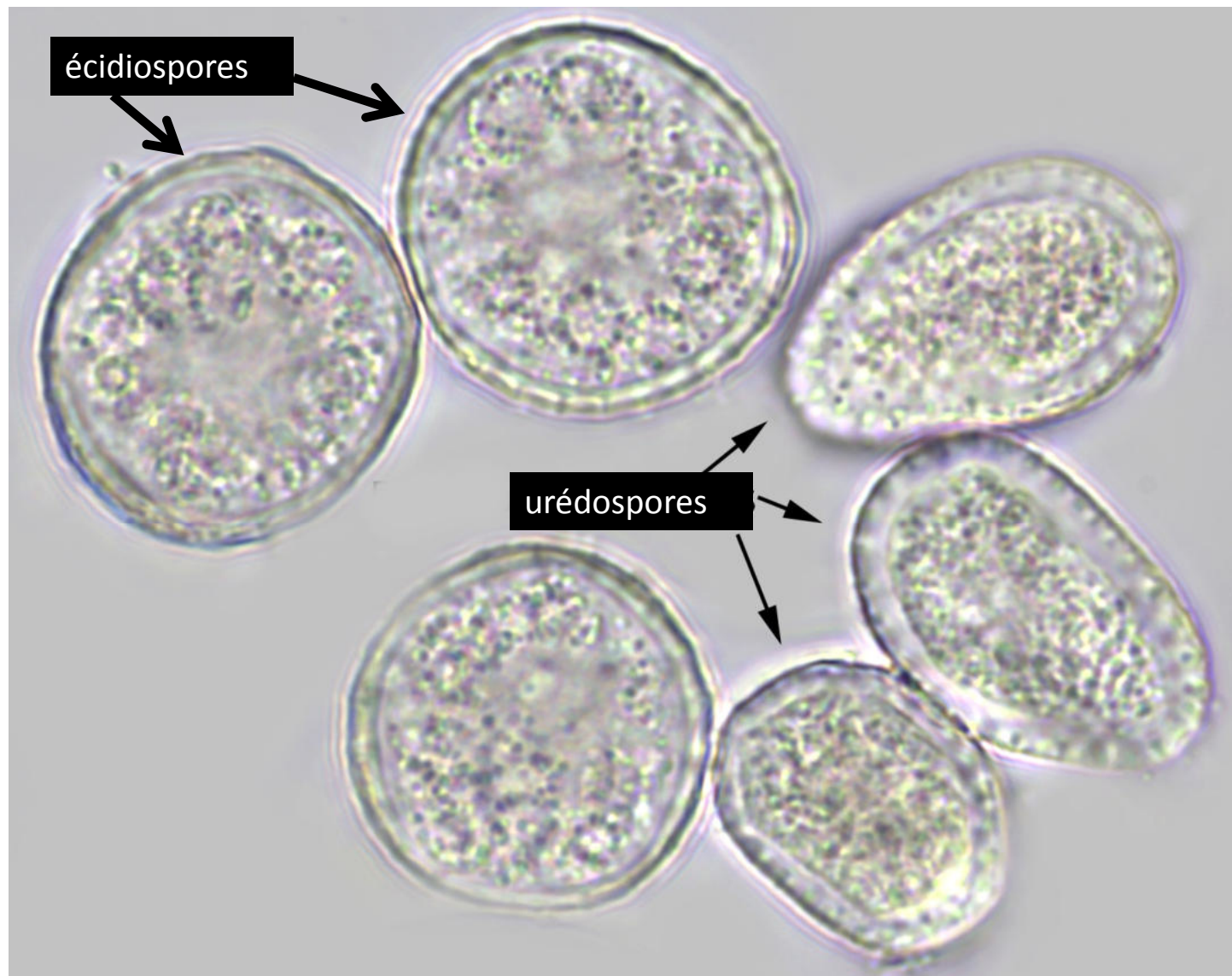
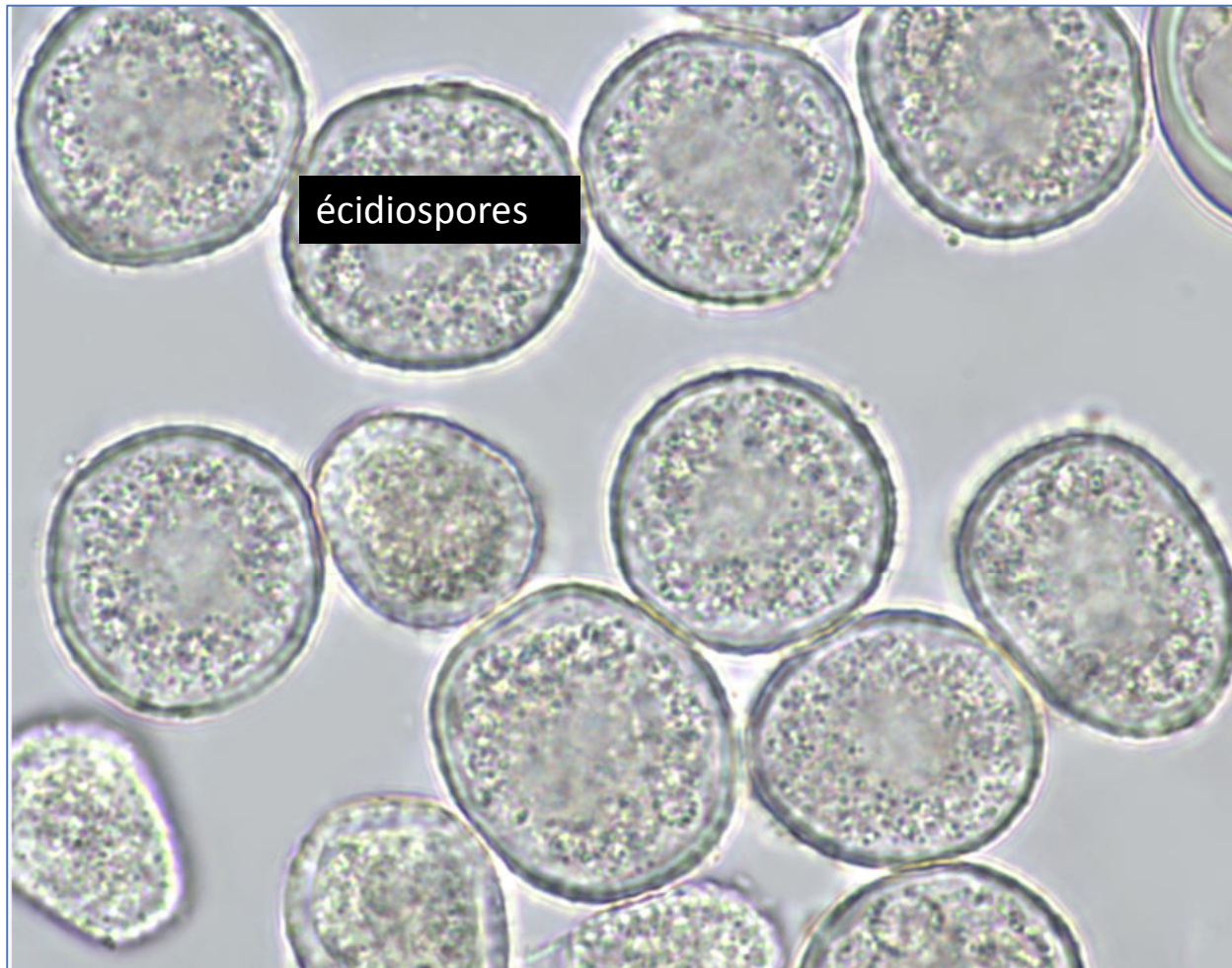


Stades I & II de *Melampsora euphorbiae-dulcis* sur *Euphorbia lathyris*

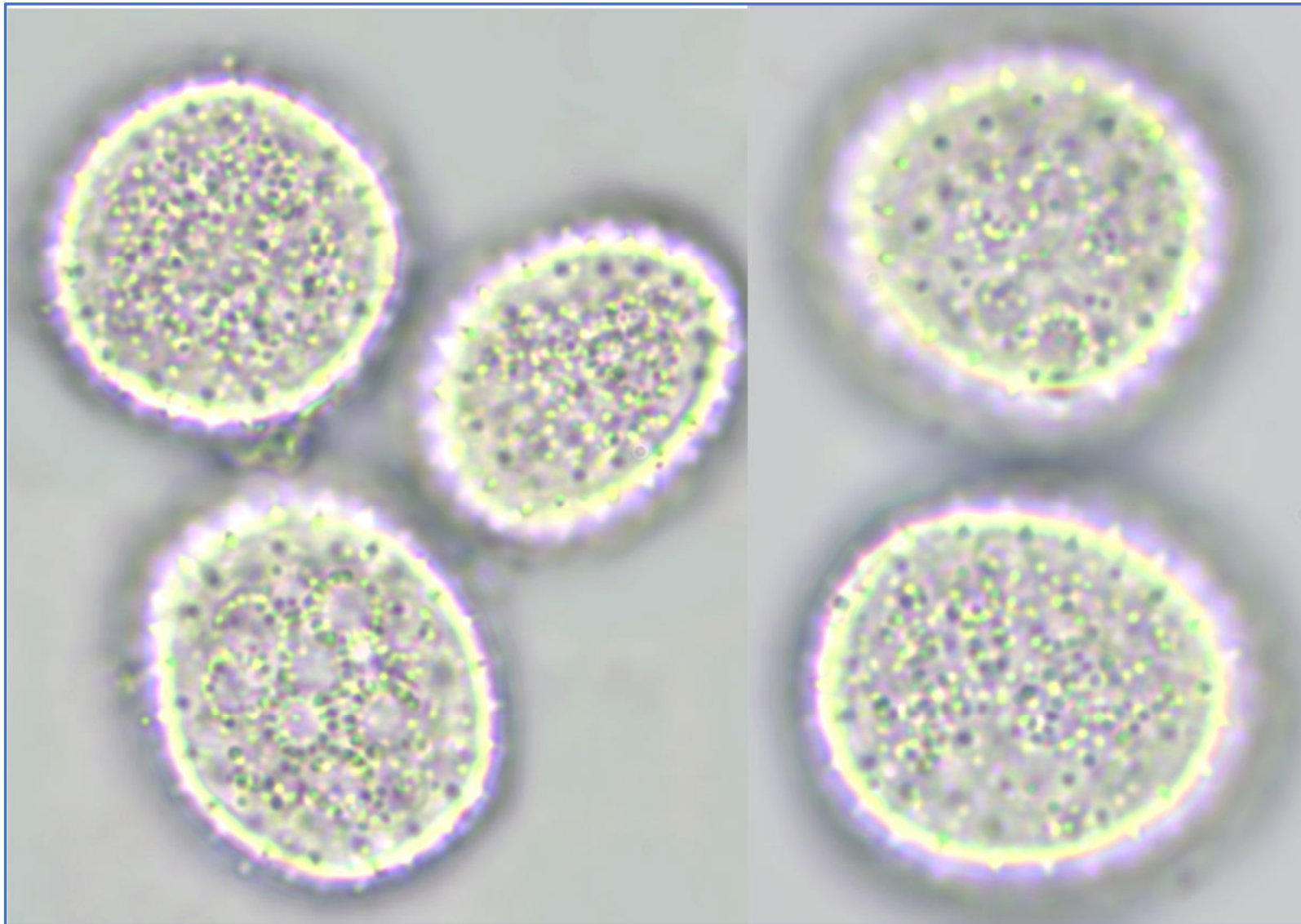
Fiche conçue et réalisée par Daniel Deschuyteneer



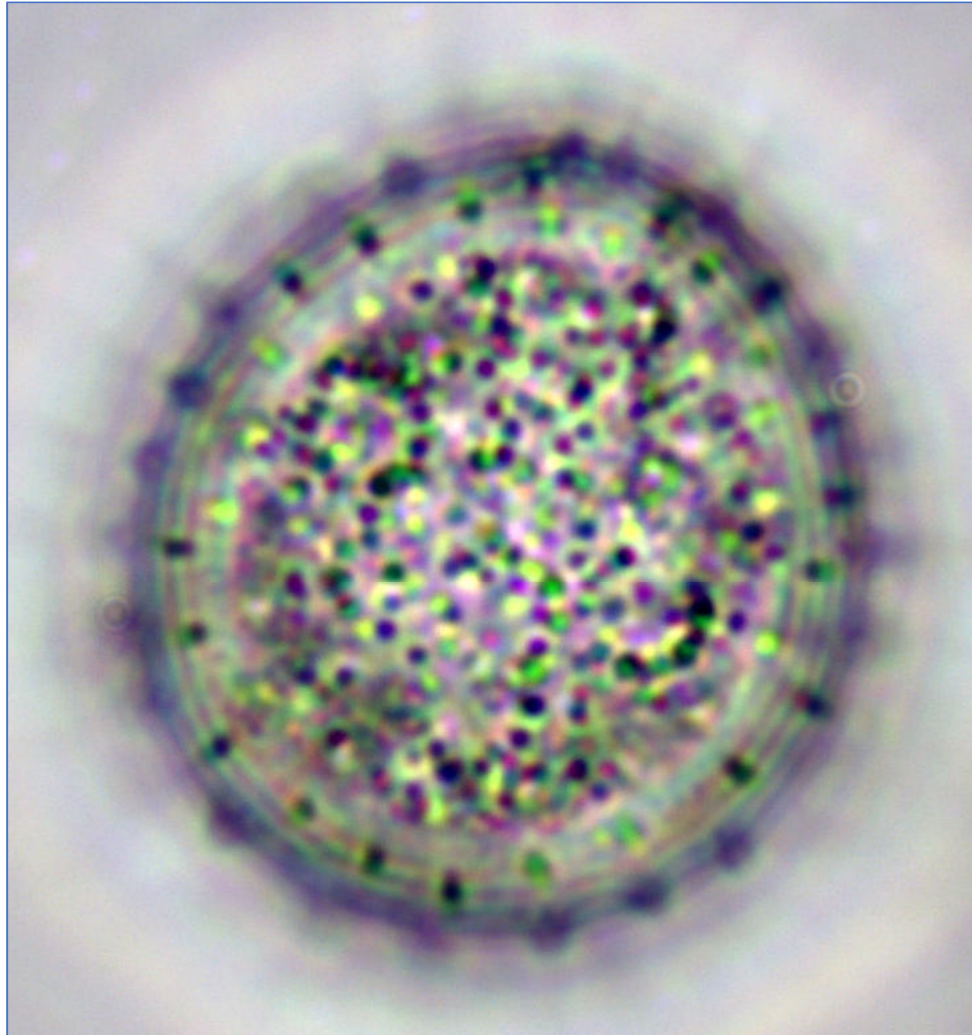




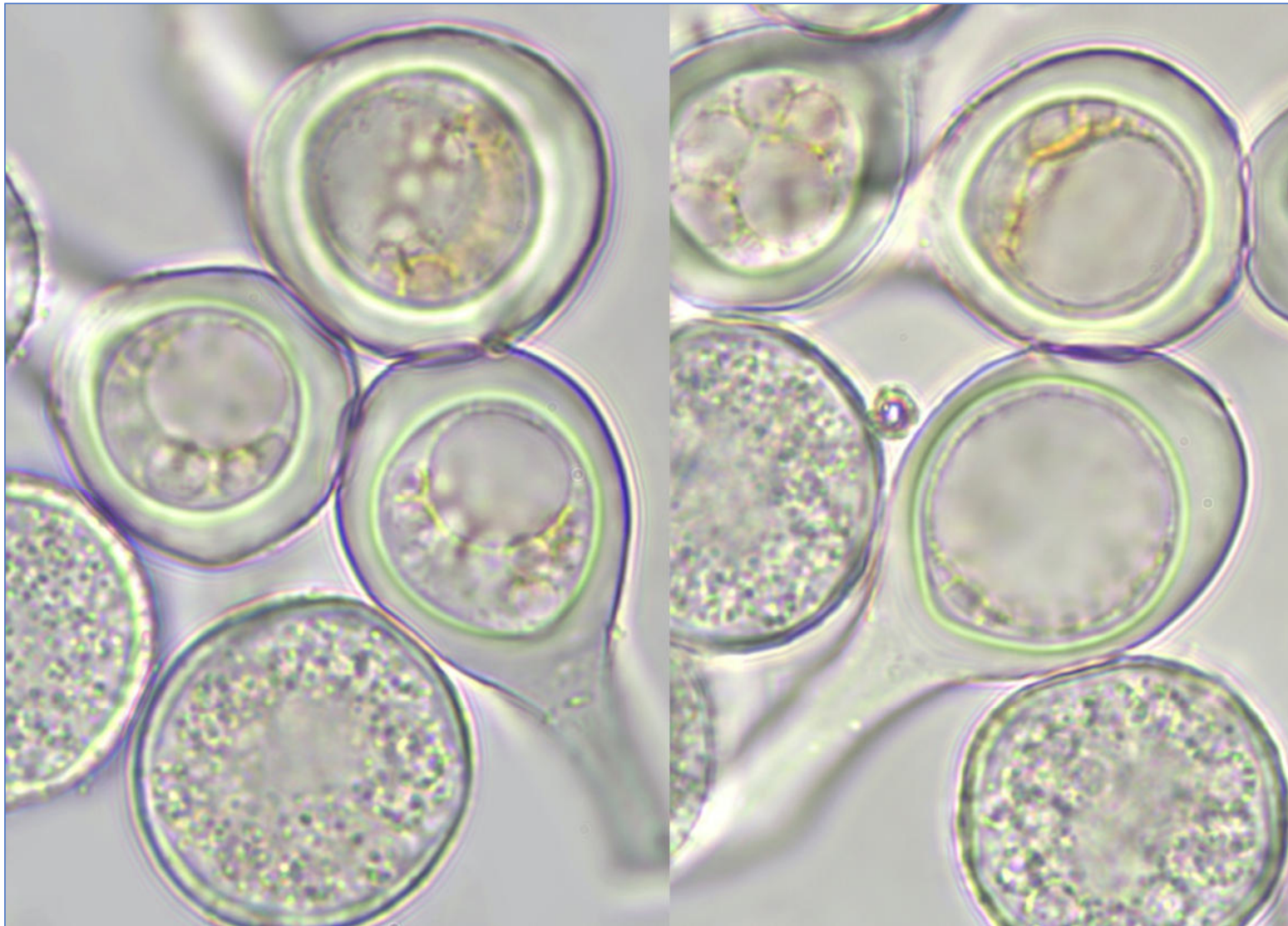
Ecidiospores subsphériques mesurant (19)20,4-**22,5**-26,8(27,6) × (15,8)18,6-**20,4**-22,1(23,9) μm .



Urédospores épineuses, mesurant (14)16-24(26) × 16-20(23,5) μm .



Uredospore épineuse



Diamètre des paraphyses : (14)16-18,6 x (18)21,7-24,5 μm

