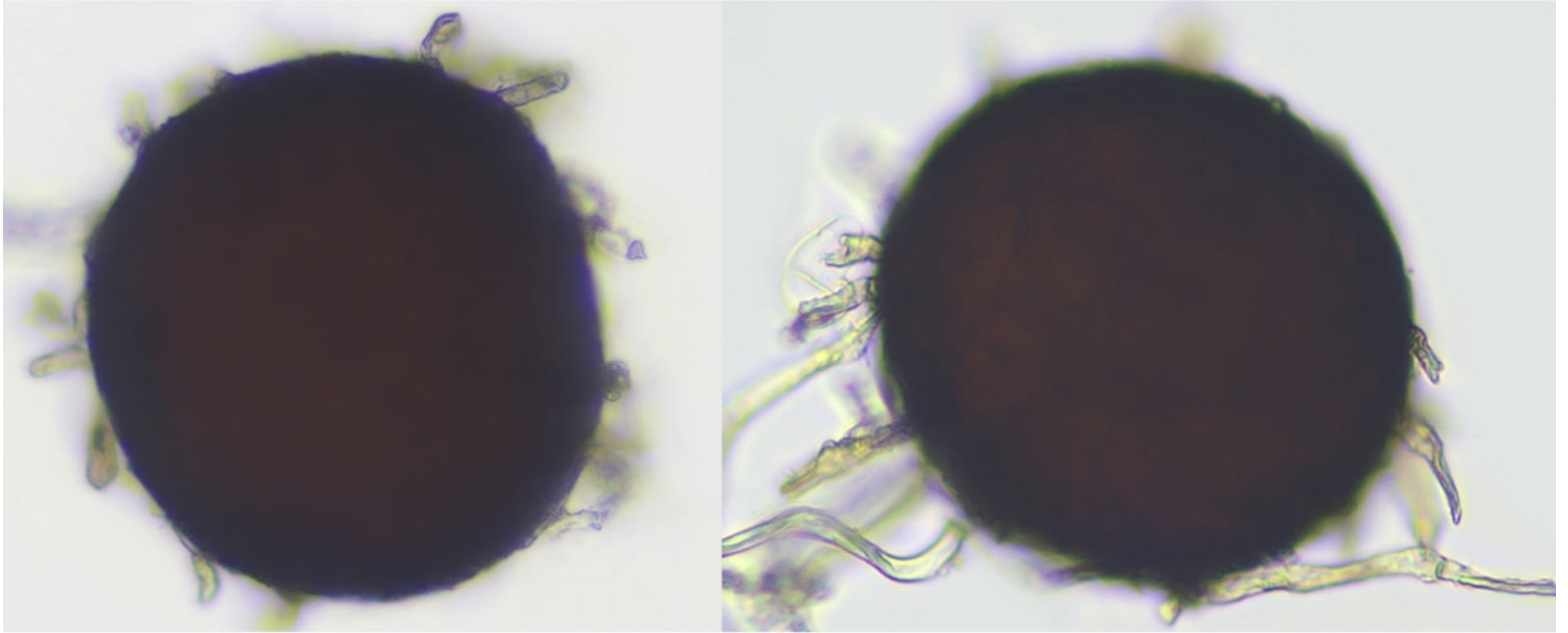


***Golovinomyces artemisiae* sur *Artemisia vulgaris***  
Fiche conçue et réalisée par Daniel Deschuyteneer

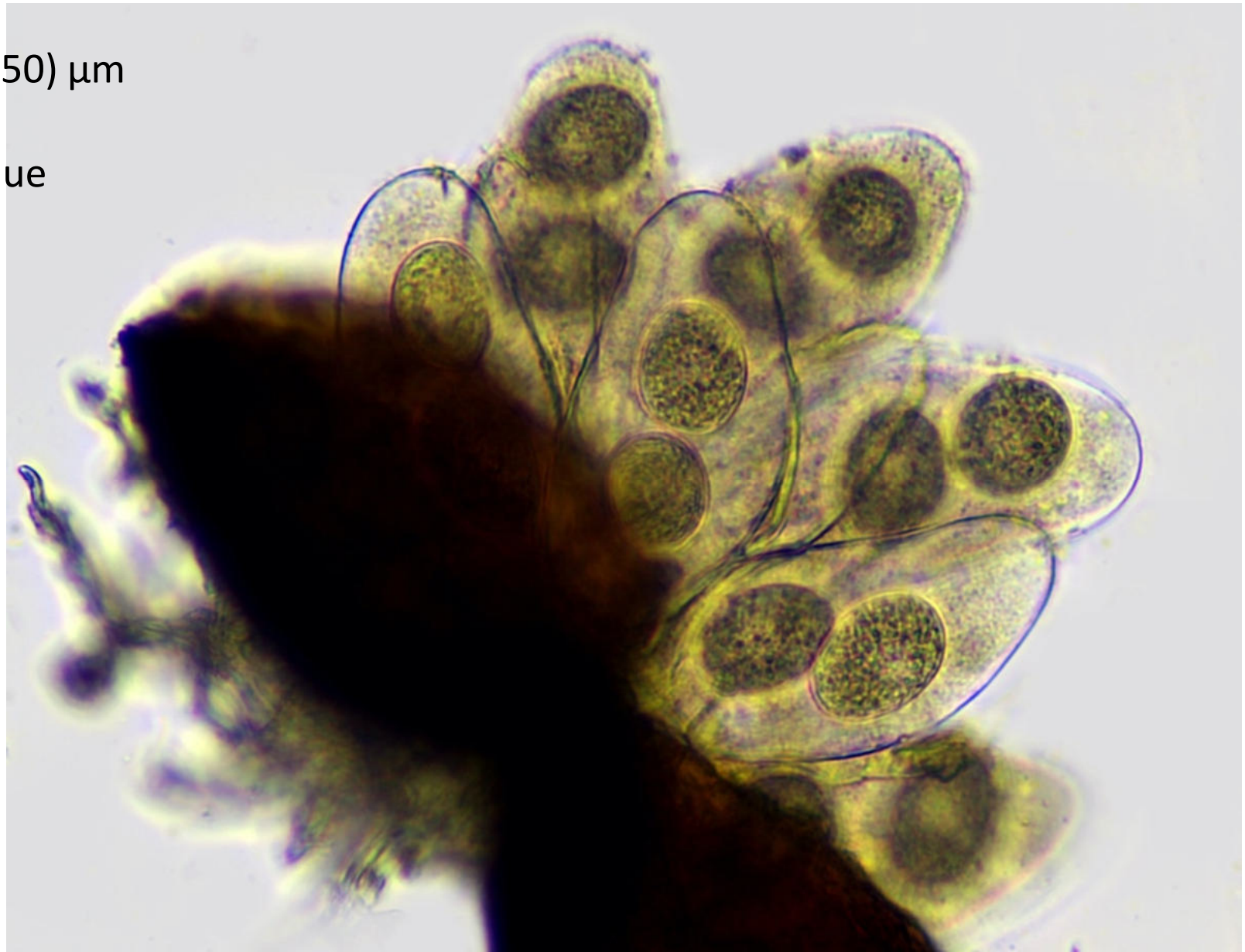


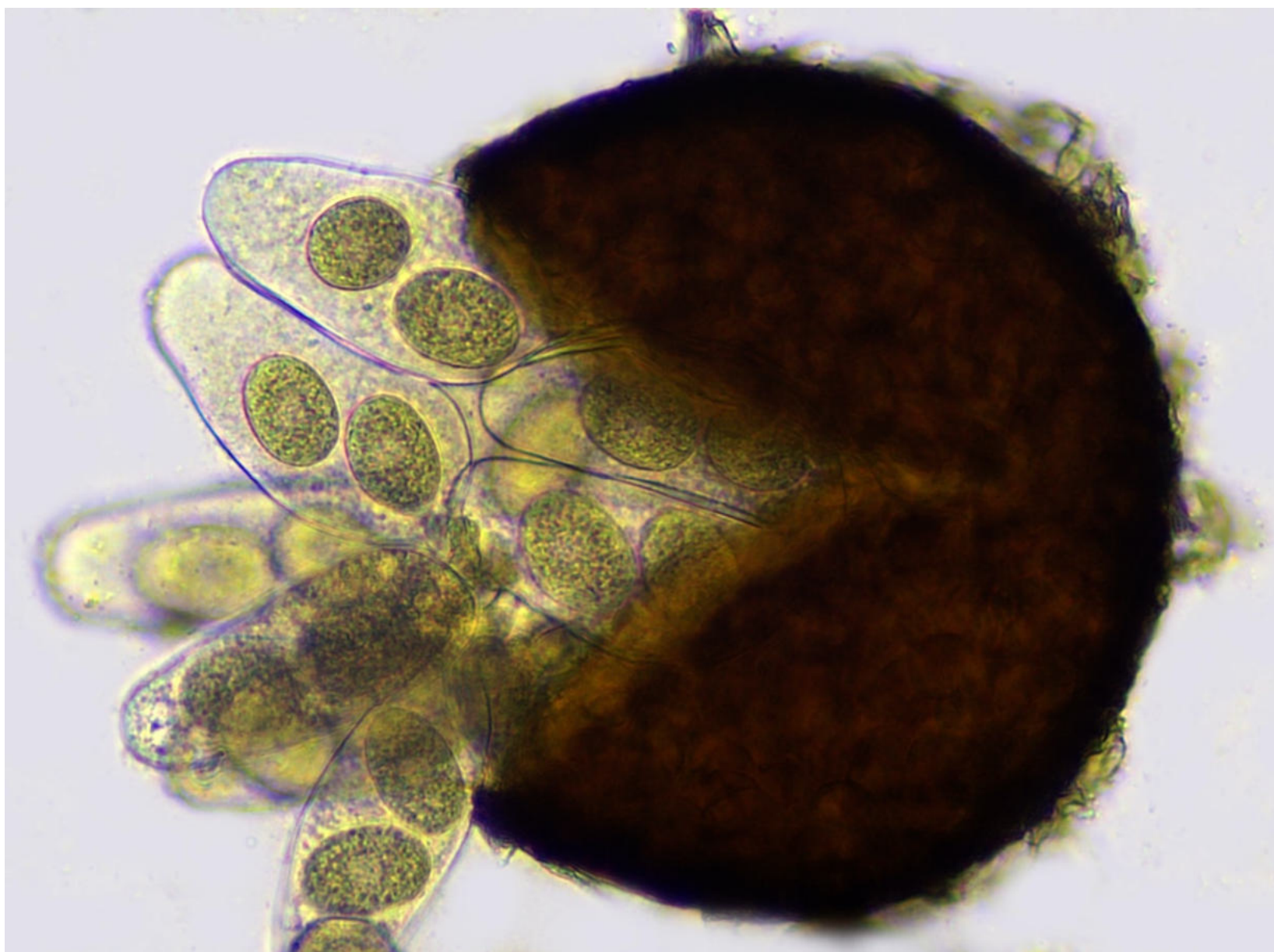


Cléistothèces : (90)100 x 150(170)  $\mu\text{m}$

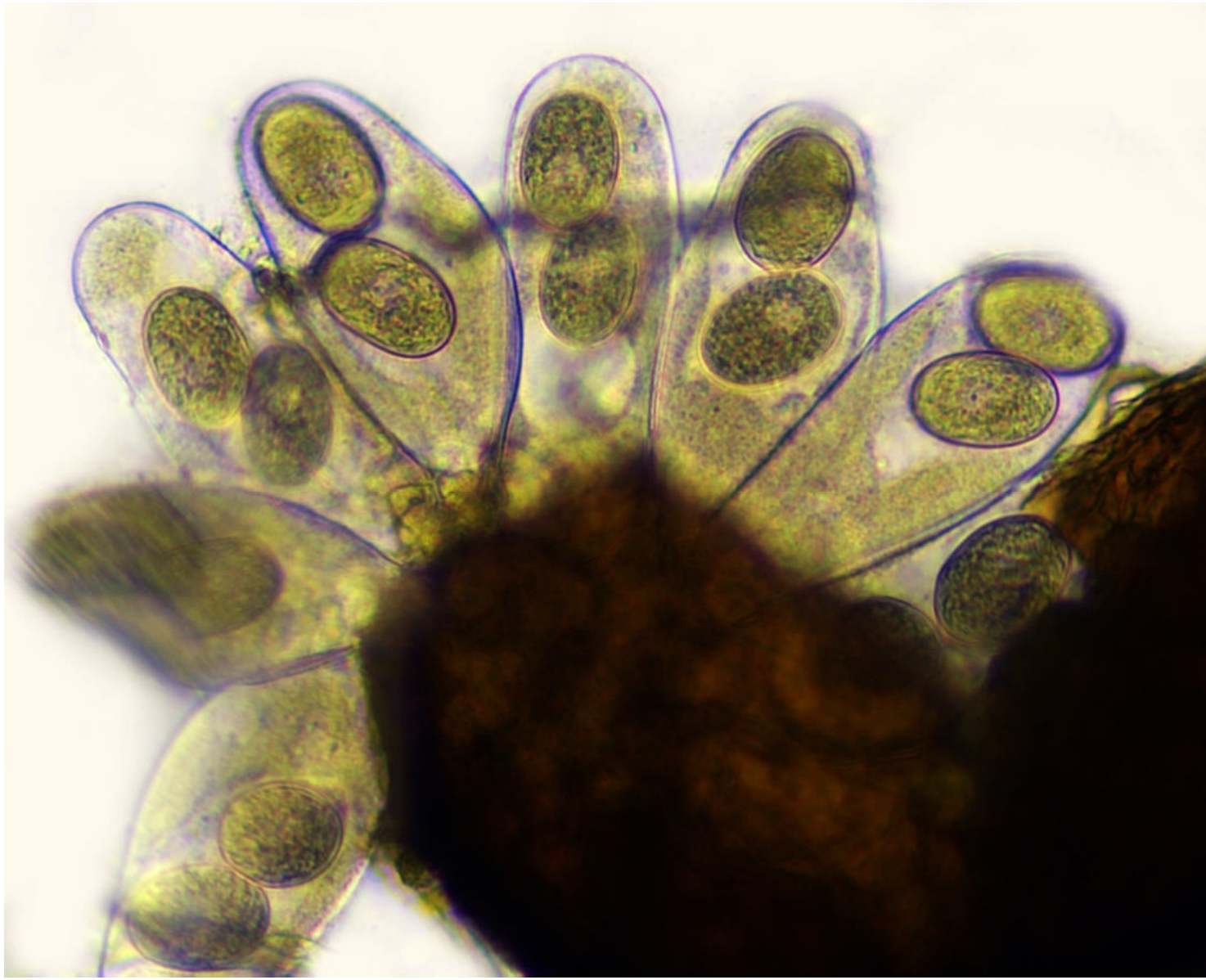


Asques : 50-90 x 25-45(50)  $\mu\text{m}$   
5-25 par cléistothèce  
2(3) ascospores par asque

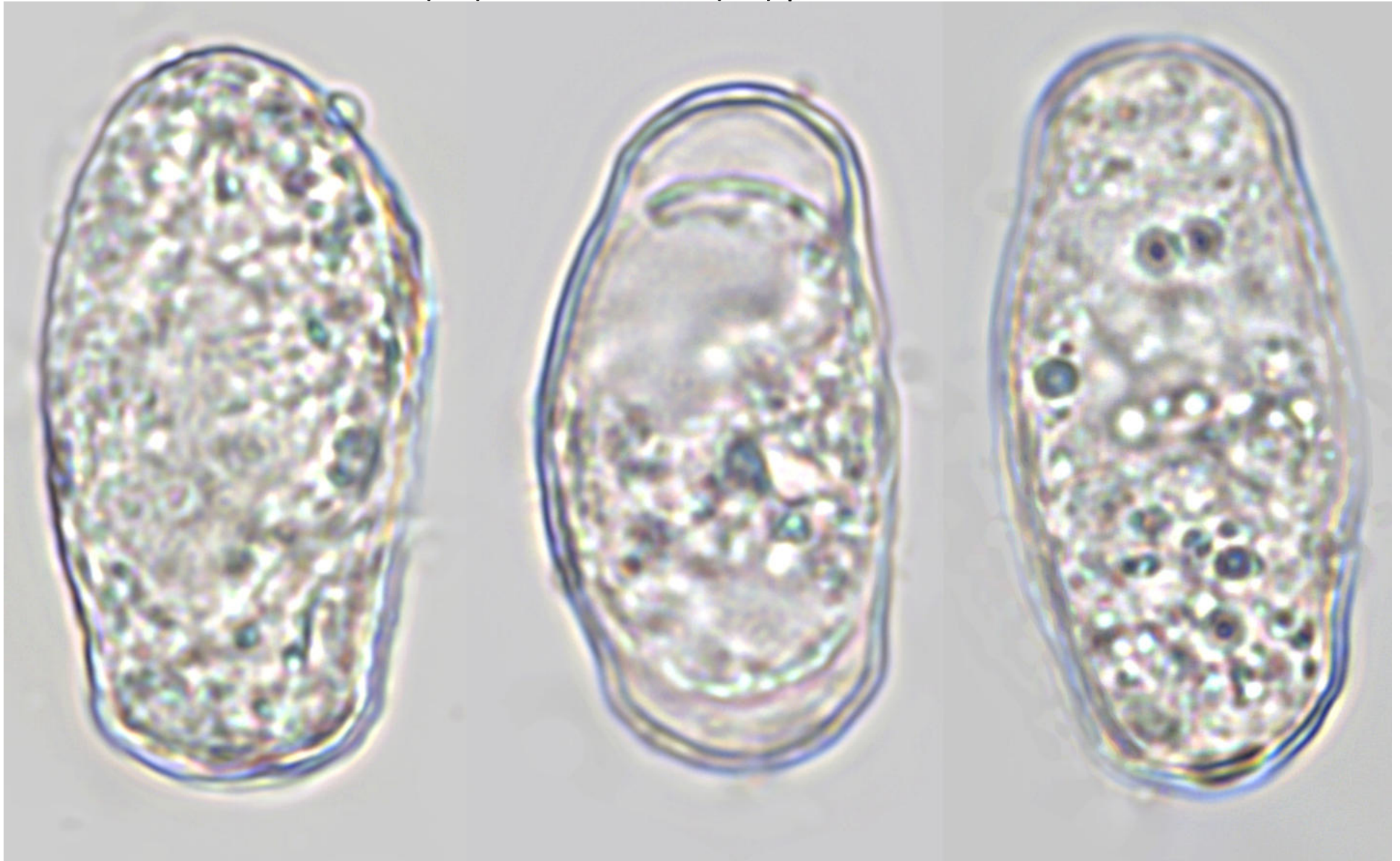




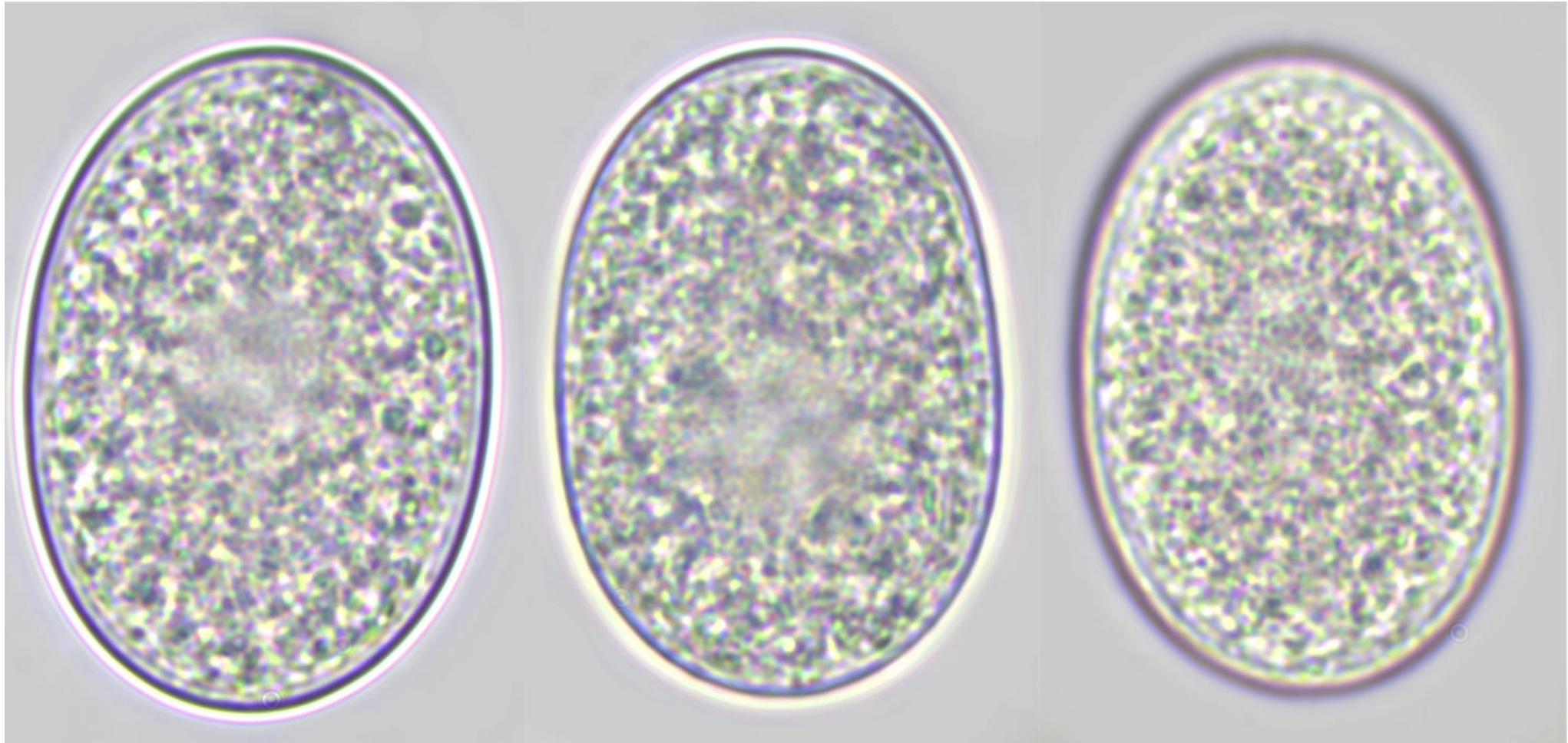




Conidies : (20)35-38 x 12-20(26)  $\mu\text{m}$







Ascospores : 18-30 x 11-20  $\mu\text{m}$