

L120920/02 *Lactarius vellereus*  
 SG Lactariopsis / S Albati

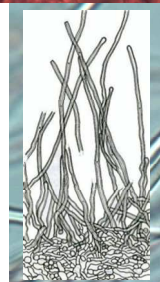
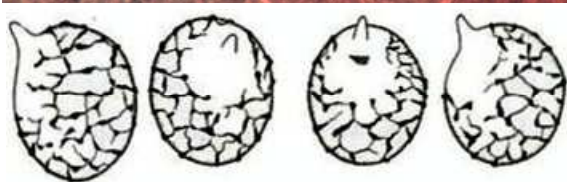
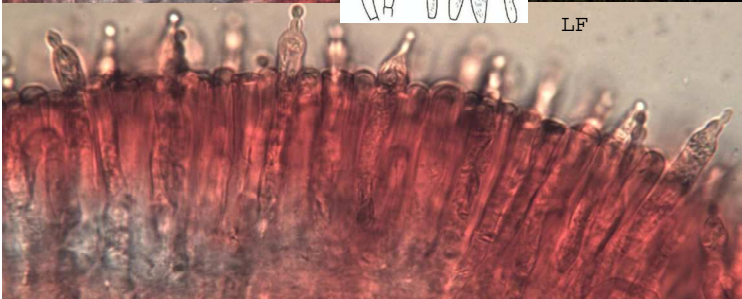
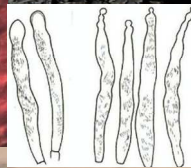
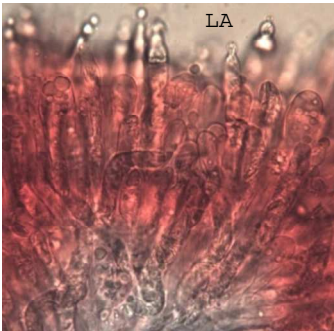
EXS L12/008

**L. vel**  
 RECTO

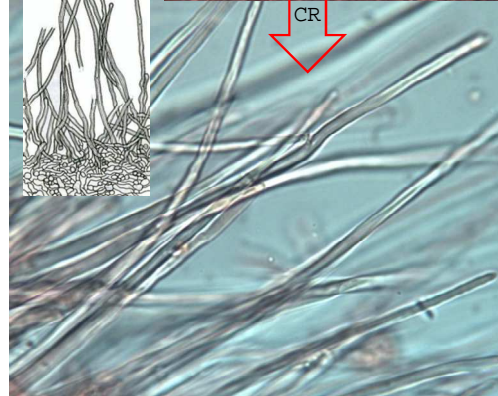
LIEU A-Zedlach  
 COOR -  
 GPS N -  
 E -  
 ALT m -  
 ECOL Larix/Picea

DESCRIPTION  
**THE GENUS LACTARIUS**  
 FUNGI OF NORTHERN EUROPE 2

LATEX wh KOH- P 252  
 HPV jas  
 TAS D(isolé > chair)  
 ODO acidulé



Pas de  
 SPOREE



REMARQUES (% verso)  
 %REF: BA713/BM94#1-11a/BK6-77/CR1513/  
 GR290/KG2-361/MA6-505



CODE	1	2	3	4	5	6	7
BMS	A	H	J	K	R	V	X/RVY
	A	H	J	L	R	V	X/RVY