

B160513.1

(Exsicc No c/o FN No)

*Stropharia rugosoannulata*

Farl. ex Murrill

Localité MLB (Pj)

Lieu dit -

Coor E/N -

Substrat D lign

Taille CH > 10 cm

ST > 10 x 1.5 cm

Insert.LA ad

Saveur douce

Odeur -

Réac- -

-chim -

Clef FNp969

BK4-459

LE1-84.1

☼ ☼ ● ● ■■■ C° H%

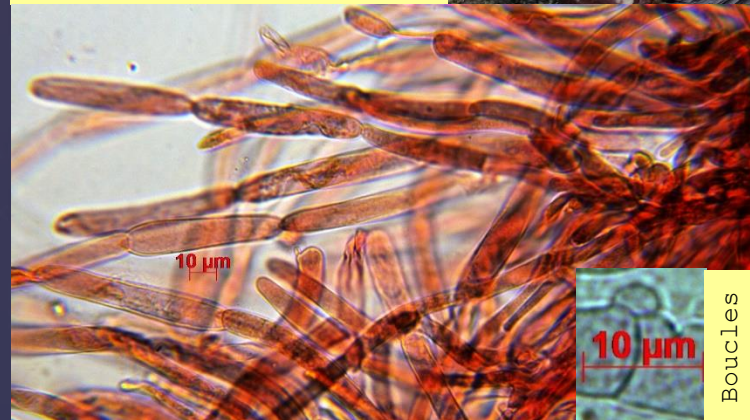
Herbier FN 139

FN B16

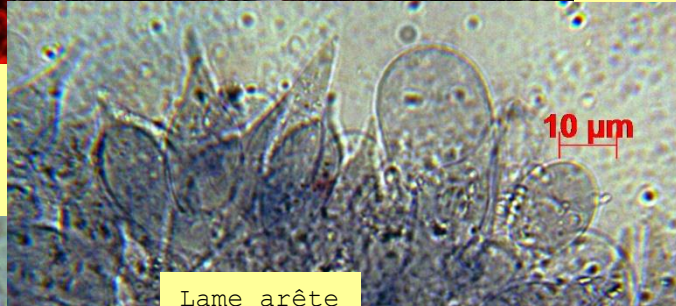
Aga-Str



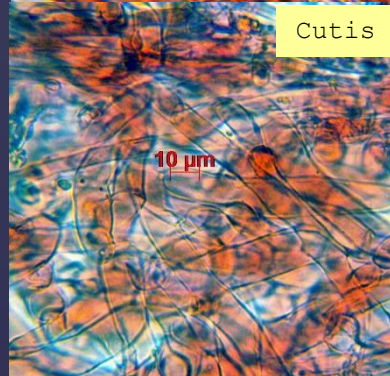
NB -



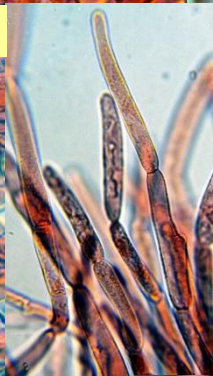
Boucles



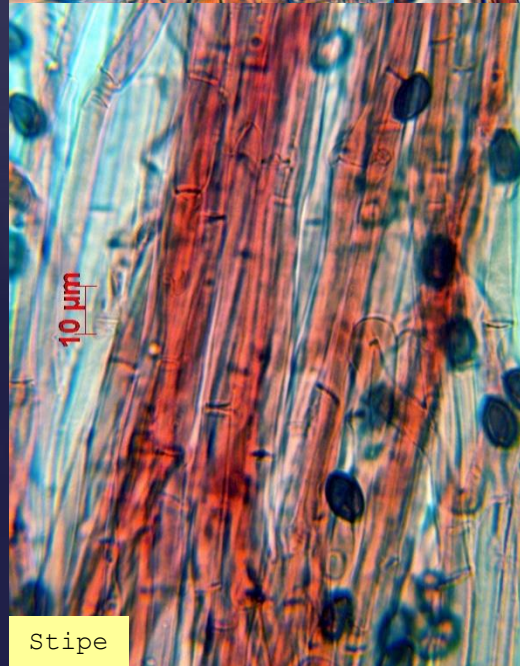
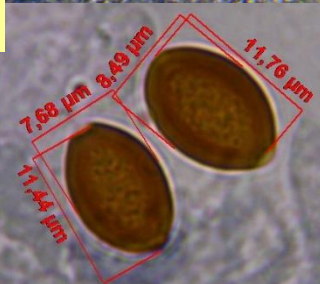
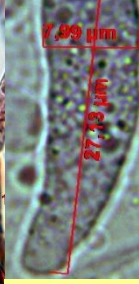
Lame arête face



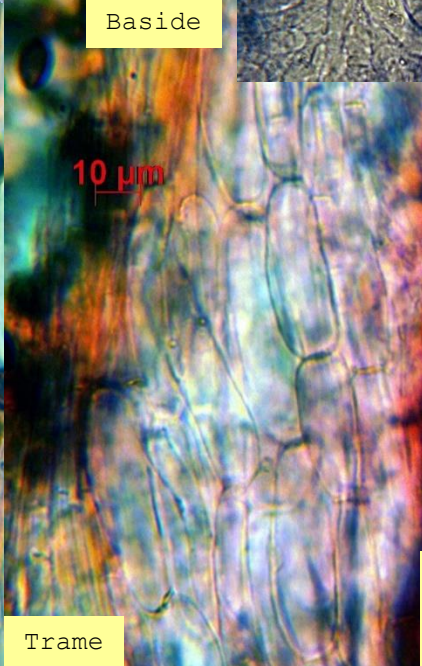
Cutis



Baside

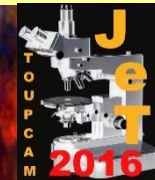


Stipe



Trame

Cystides  
Pileo -  
Cheilo +  
Pleuro +  
Caulo -



Spores µm  
amy- dex-  
Sporée no

