



R120814/03 *Russula sericatulata* EXS R12/029 **R. ser**  
 SG Incrustatula / S Amethystinae / Ss Integroidinae / Ser Sericatulata **RECTO**

LIEU L-Wilwerwiltz  
 GPS N 49°58'39.08"  
 E 05°58'24.94"  
 COOR W1-76(JeT)  
 ALT 390 m  
 ECOL Carpinus  
 ODOR -



5	SPCO	ROM	DAG
P	Ia-	IIa	1- 4
Q	IIb-IIIb		5-11
R	IIIc-	IVe	12-26
6	S-ACRE	T-DOUX	U
F	-Gaiac-		
e--	<5"		
o	>5"		

- 1 A ro-rs-po
- B ve-ol
- C ja-or
- D bl-li-vo
- E wh +-
- F br-gr-no
- G mixte

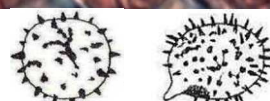
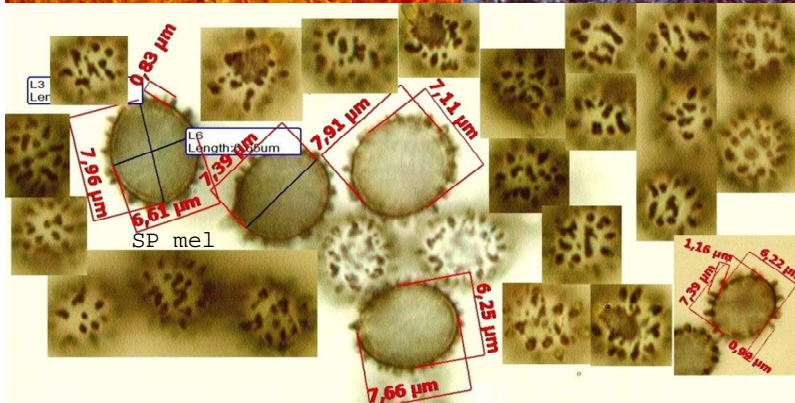
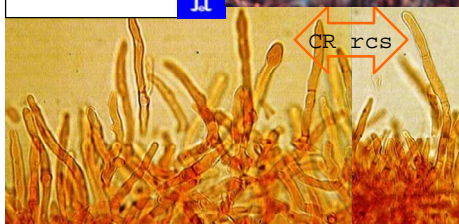
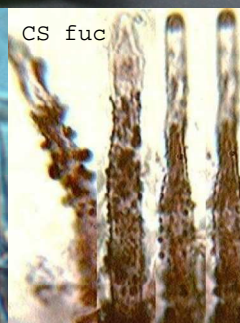


- 2 CUTIS SEP
- H I J
- ±¼ ¼¾ +¾

- 3 STIPE
- K wh
- L color

- 4 CHAPEAU Ø
- M 10-20
- N 3-10 cm
- O 1- 3

- 7 V CHAIR
- DECOLOR
- 8 W DC+
- X DC-HP-
- Y HP+
- Z DC+HP+



REMARQUES (% NOTES verso)

REF:

RO743/SA1439/BM-#113/BK6-200/CR1504/ER212/KG2-478/MA5-/GR394

1	2	3	4	/	5	6	7	8
D	I	K	M		R	T	-	Y
F	-	-	-		-	-	-	-

2013