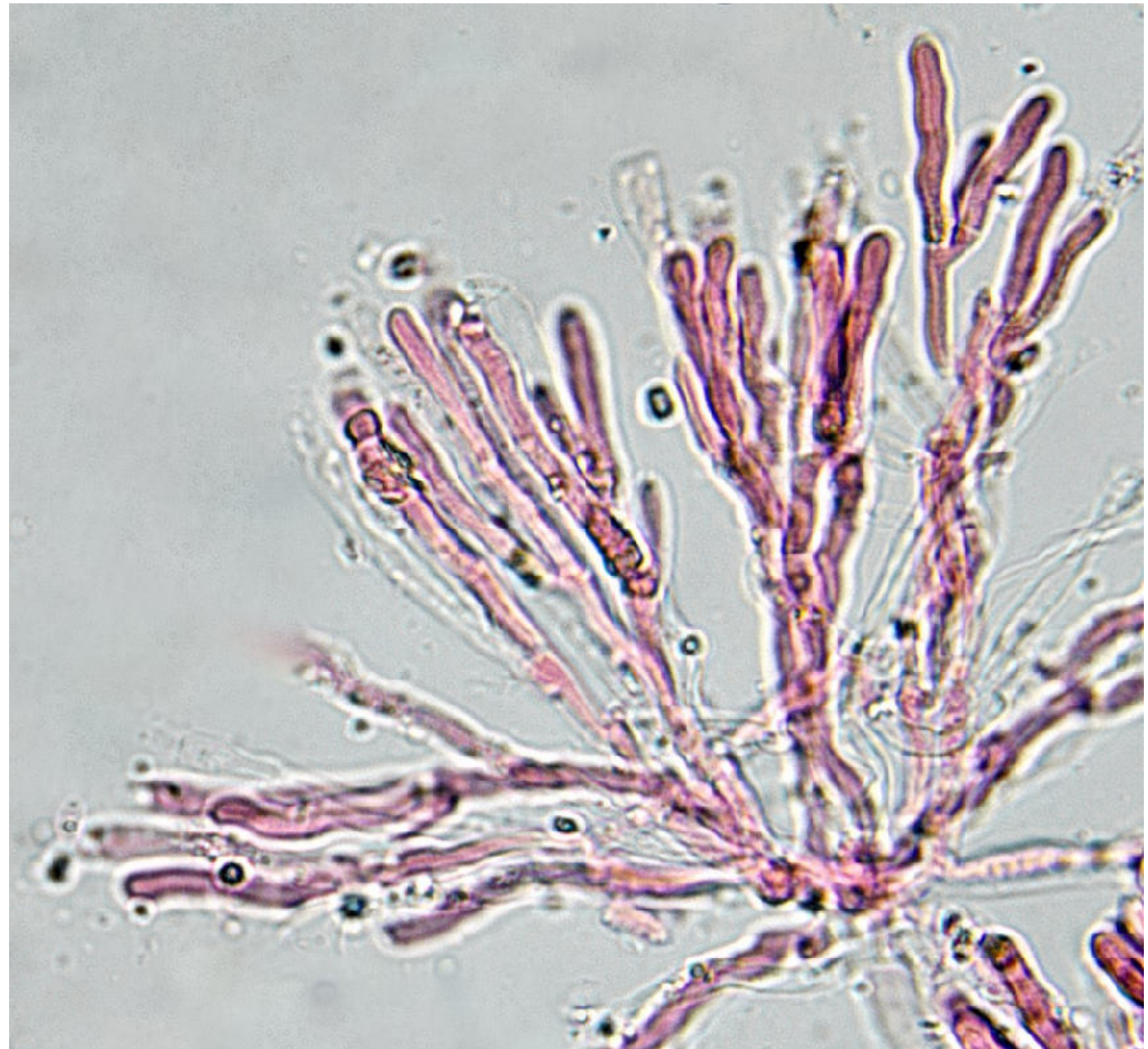
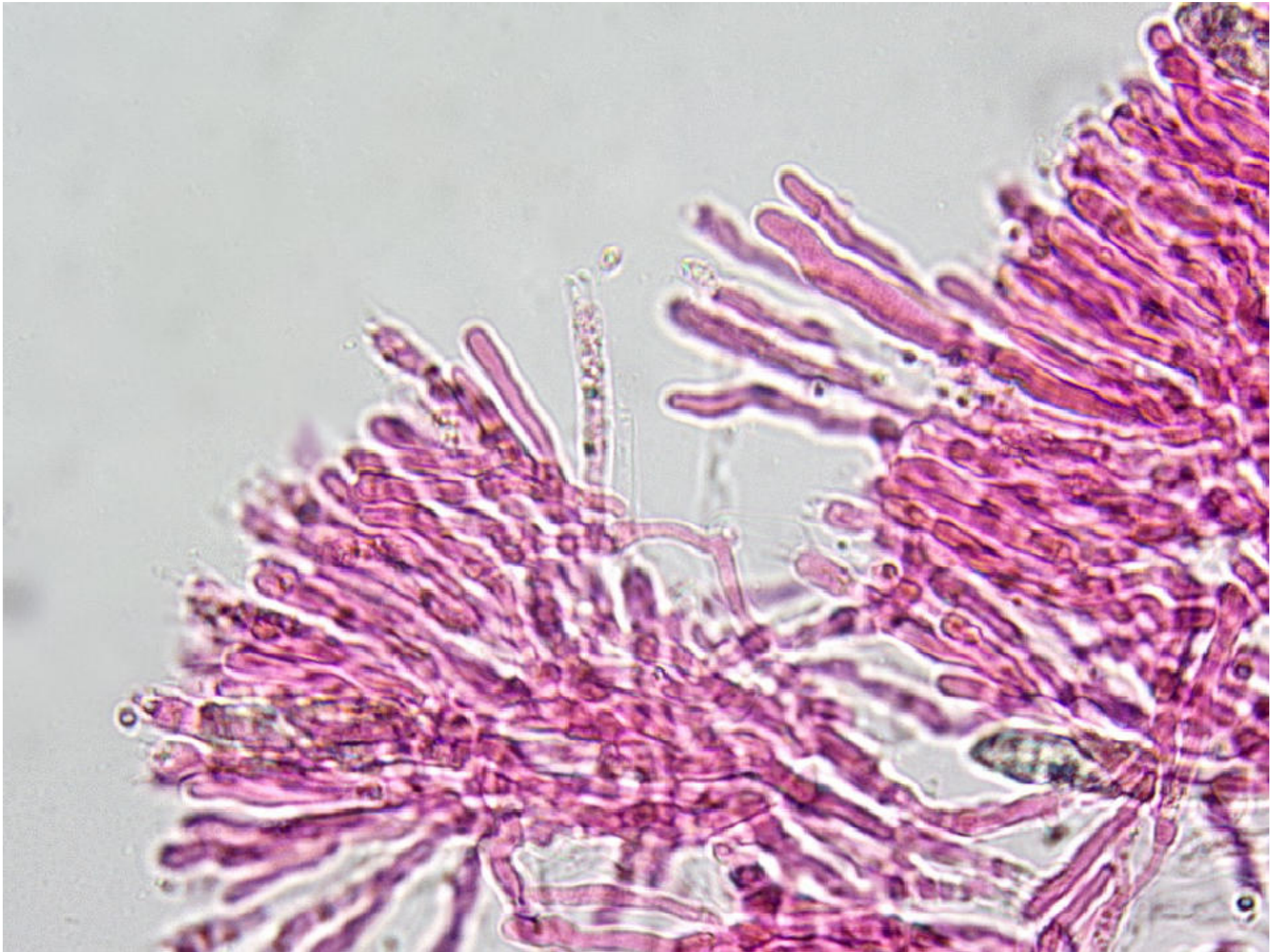


Phanerochaete velutina sur *Populus alba*

Microscopie et photos : Marcel Lecomte

Cystides en candélabre

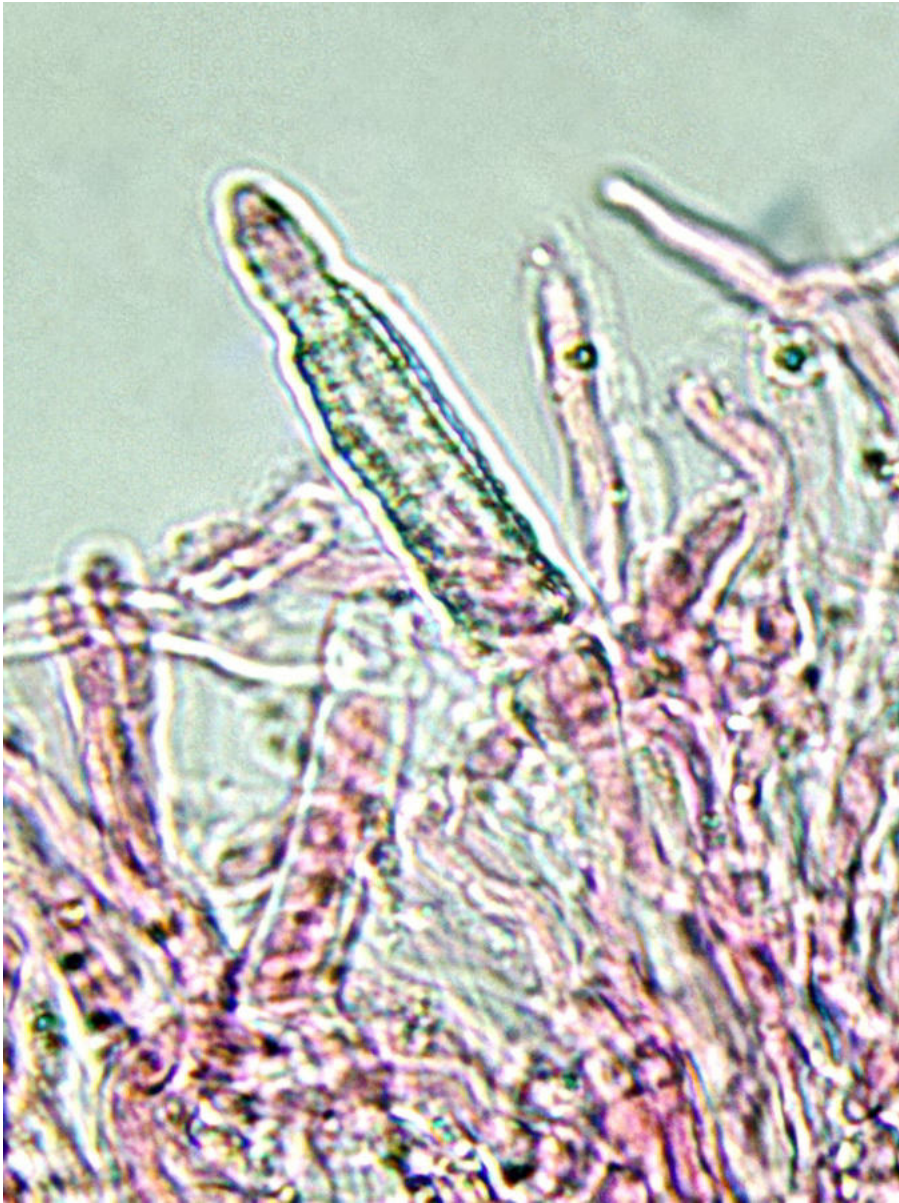


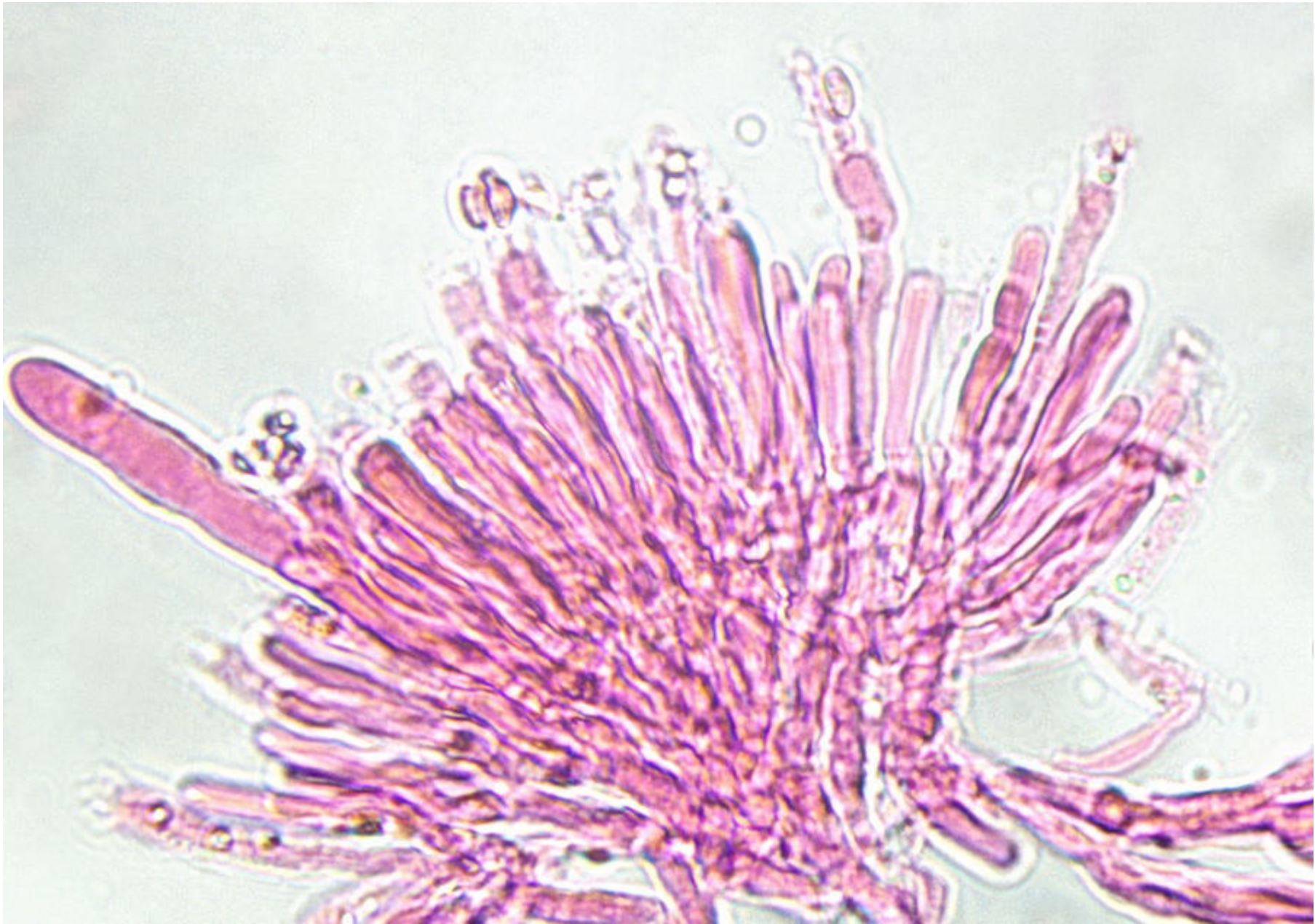




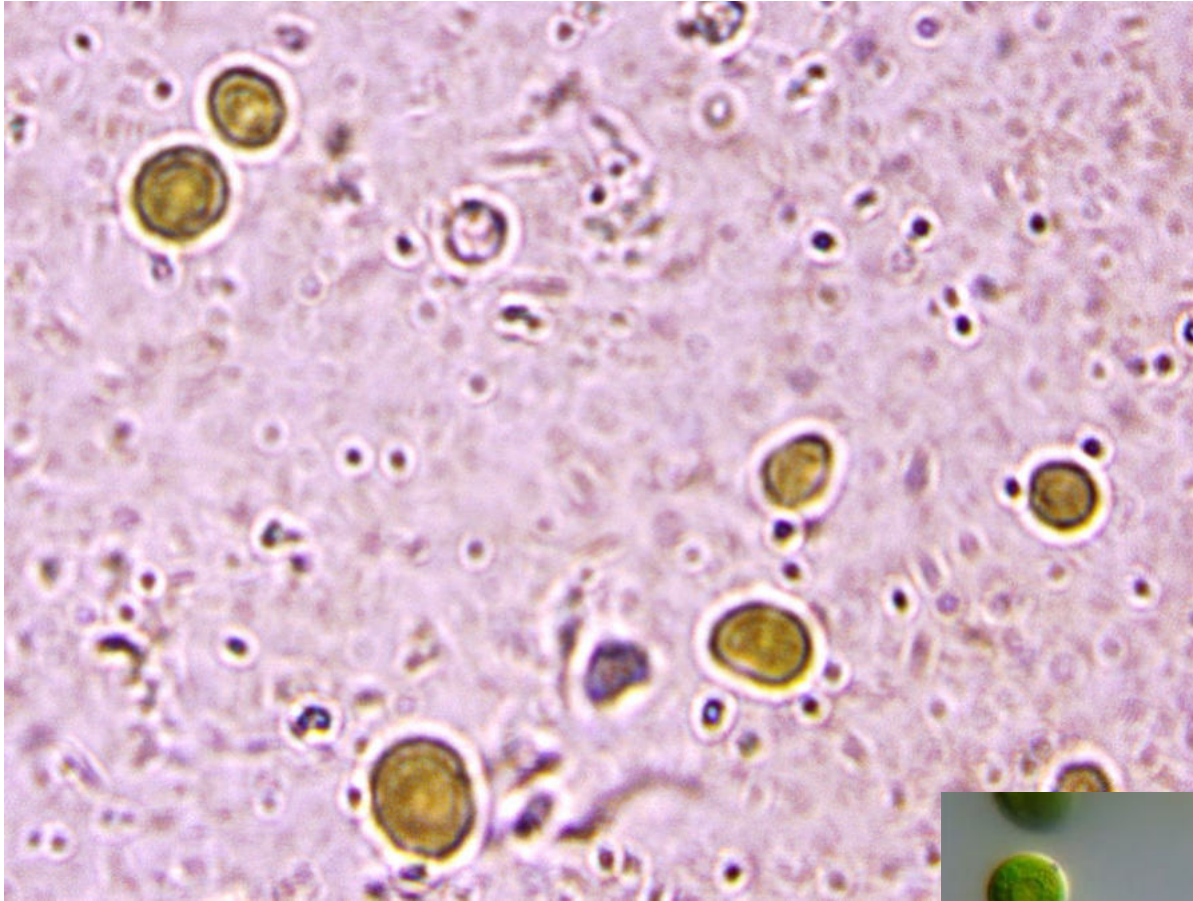
Lamprocystides et basides

Lamprocystides





Basides avec spores (5-7 x 3-3,5 μm)



La croûte est largement encombrée par des algues unicellulaires, peut-être du genre *Haematococcus*

Haematococcus sp. (photo internet)

