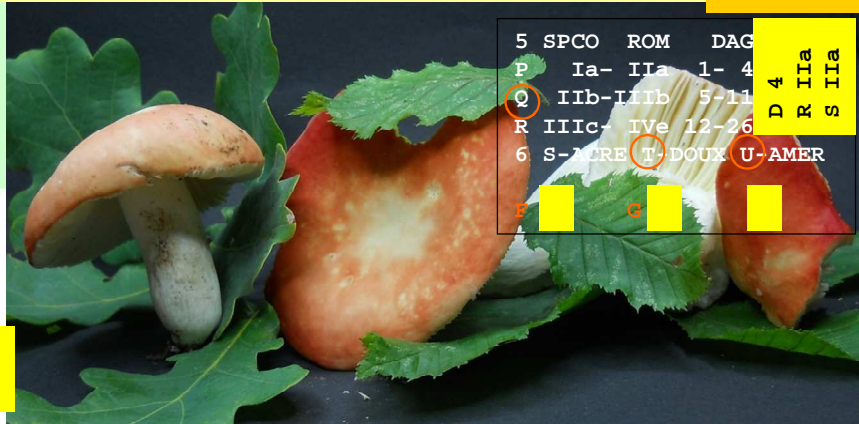


R100930/03-110827/05 *Russula lepida*  
SG *Russula* / S *Paraincrustatae* / Ss *Lepidinae*

EXS R10/051  
R11/018

**R. lep**  
RECTO 1

LIEU L-Wilwerwiltz  
GPS -  
COOR 65/117  
ALT 350 m  
ECOL *Carpinus/Quercus*



- 1 **A** ro-rs-po
- B** ve-ol
- C** ja-or
- D** bl-li-vo
- E** wh +-
- F** br-gr-no
- G** mixte

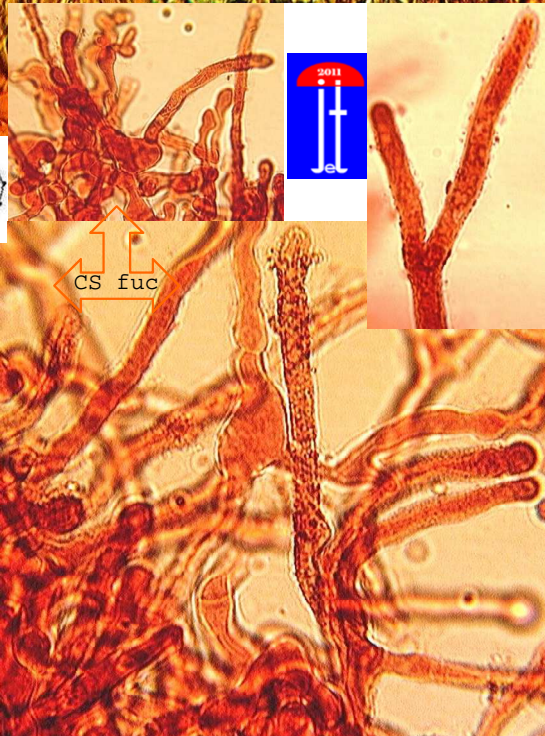
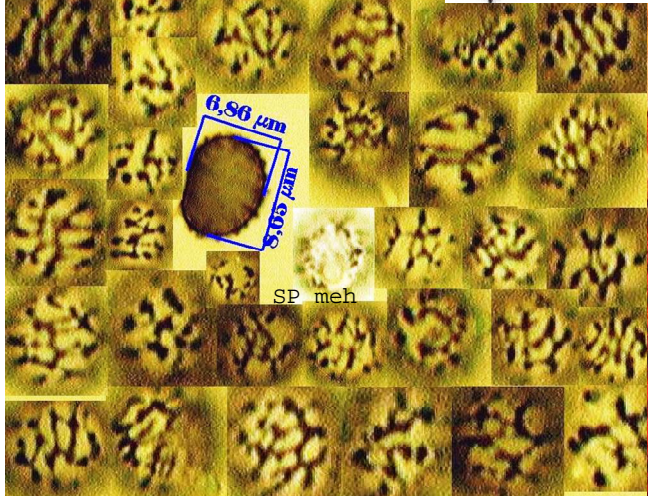
\*Gaiac\*  
<5"  
>5"

- 2 CUTIS SEP
- H** I J
- ±¼ ¼¾ +¾

- 3 STIPE
- K** wh
- L** color

- 4 CHAPEAU Ø
- M** 10-20
- N** 3-10 cm
- O** 1- 3

- 7 **V** CHAIR
- DECOLOR
- W** DC+
- X** DC-HP-
- Y** HP+
- Z** DC+HP+



REMARQUES

REF:

RO413/SA1128/BM60#97/BK6-194/CR1481/ER172/KG2-493/MA5-431/GR190

1	2	3	4	/	5	6	7	8
A	H	K	N		Q	T	-	W
CE	_	L	_		_	U	_	?Z