

B201011.1
(Exsicc No c/o FN No)
Armillaria

Herbier **FN 2--**
FN B20 Aga-Phy

Localité L-Merkholtz
Lieu dit Sangen
Coor E/N LA 660 142
Substrat Souche en
décomposition
Quer ro

Taille CH 15 cm
ST 18 x 3.5 cm

Insert.LA déc

Saveur douce

Odeur faible

Réac- -

-chim -

Clef FNp

BKx-x

LE1-2.x

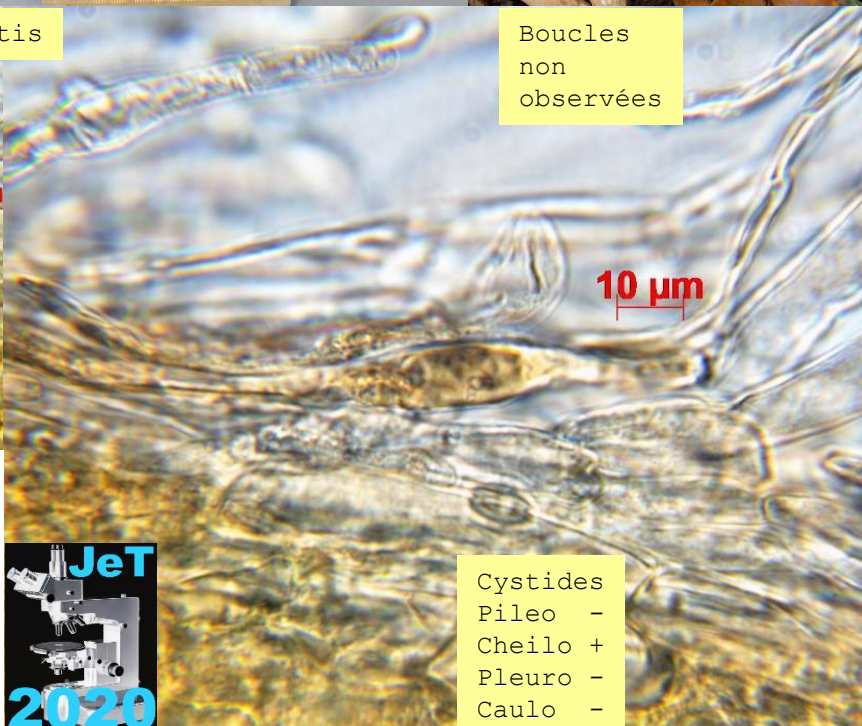
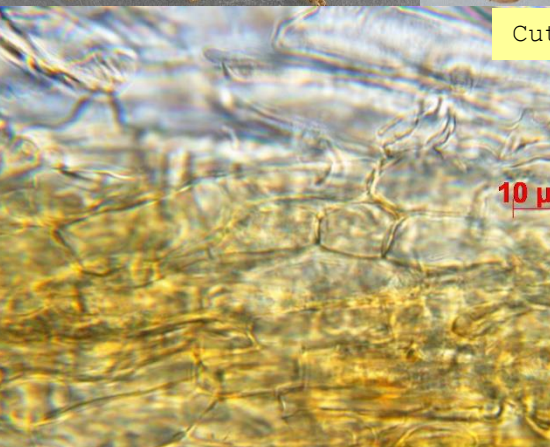


⚙️ ⚙️ ●● "////" C°12 H%70



Cutis

Boucles
non
observées



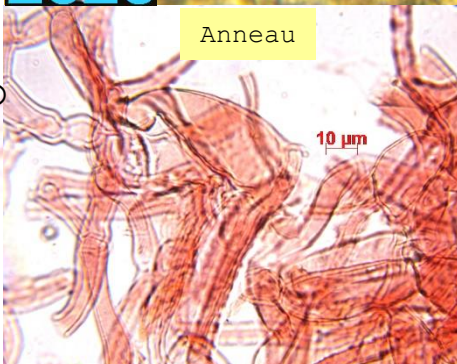
Basides

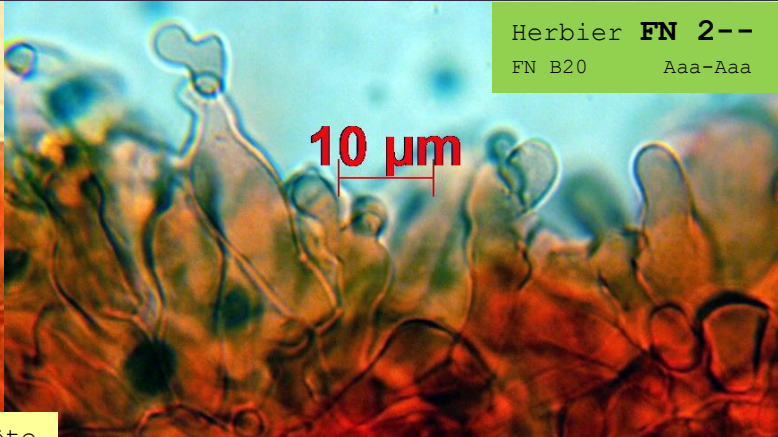


Cystides
Pileo -
Cheilo +
Pleuro -
Caulo -

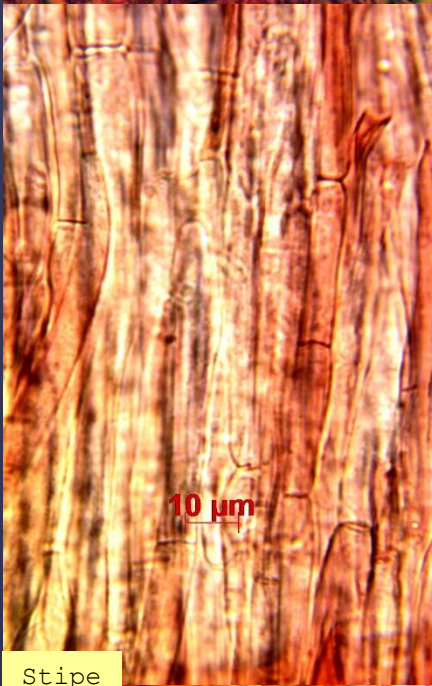
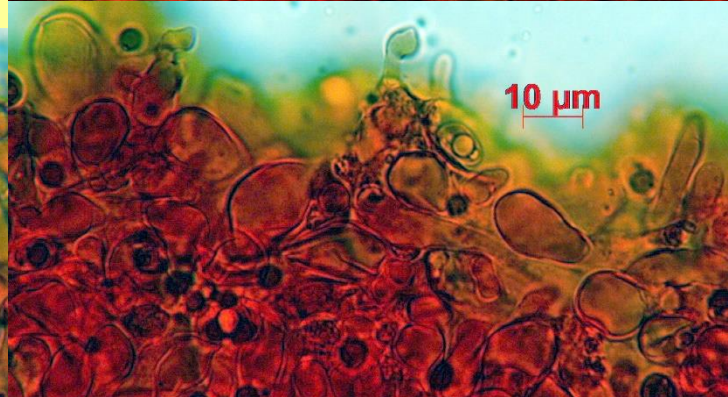
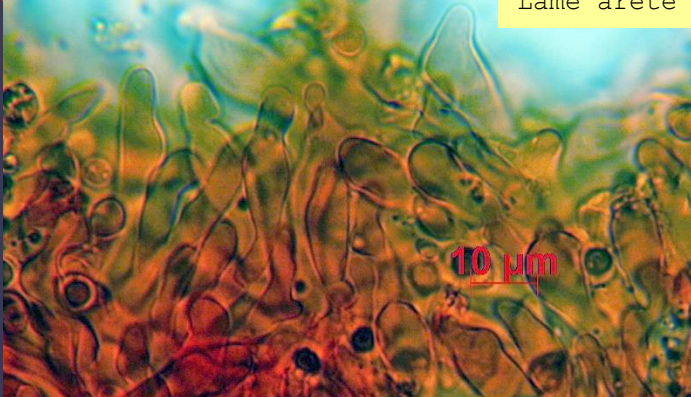
Anneau

Cheilo





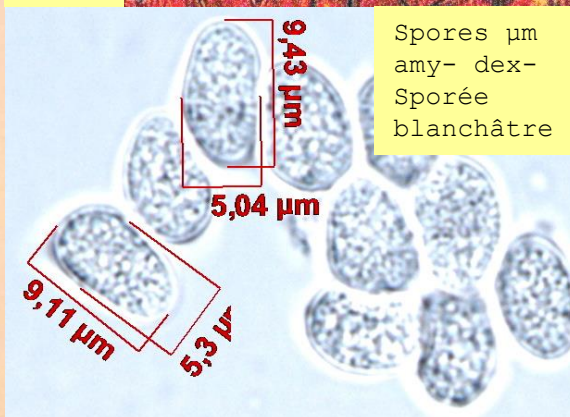
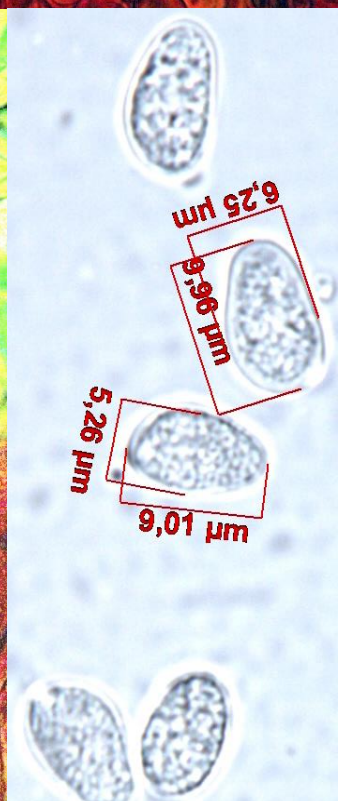
Lame arête



Stipe



Trame



Spores µm
amy- dex-
Sporée
blanchâtre

